



## Hilary Close, SW6

£1,846 Per week

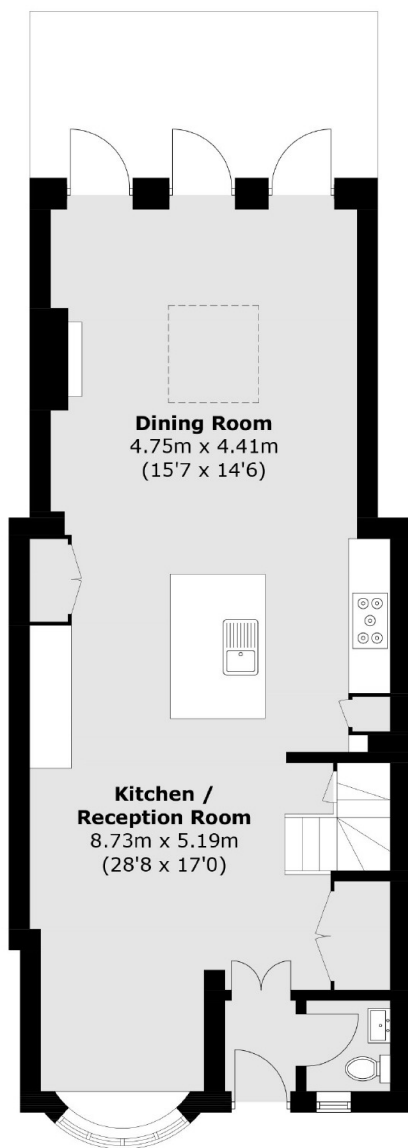
This three bedroom, two bathroom home has been beautifully refurbished throughout. The property features a large open-plan kitchen and dining area, a bright reception room leading to a private garden, and a top-floor master suite with shower room and excellent storage. Two additional bedrooms share a family shower room. Additional benefits include off-street parking.

Set within a gated courtyard in the sought-after Moore Park Estate, this property is a short walk to the amenities and transport links of Fulham Broadway.

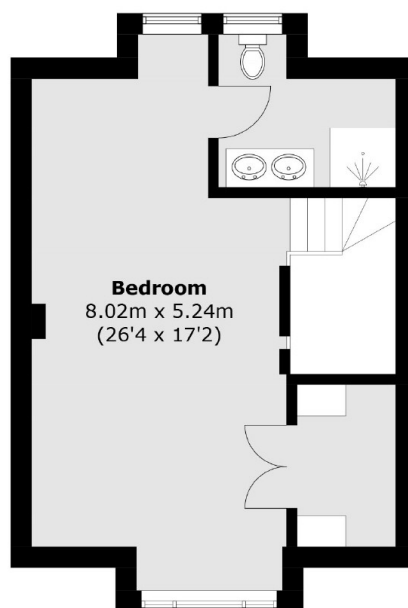
### Features

- Three Bedroom
- Full House
- Modern Interiors
- Gated Development
- Off-street Parking
- Private Garden

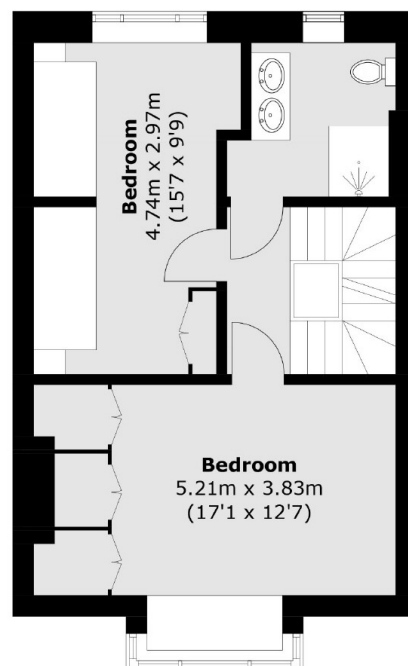
# Hilary Close, London, SW6



**Ground Floor**



**Second Floor**



**First Floor**

Total area (approx.): 143.0 sq. m (1,539.2 sq. ft)

## Dexters

Fulham  
569 Fulham Road  
London  
SW6 1ES  
Lettings  
020 7386 7386

Energy Rating: C. We aim to make our particulars both accurate and reliable. However they are not guaranteed; nor do they form part of an offer or contract. If you require clarification on any points then please contact us, especially if you're traveling some distance to view. Please note that appliances and heating systems have not been tested and therefore no warranties can be given as to their good working order.

 **RICS** | Regulated  
Estate Agent  
and Letting Agent

[dexters.co.uk](https://www.dexters.co.uk)