

## Hilary Close, SW6

£1,980 Per week

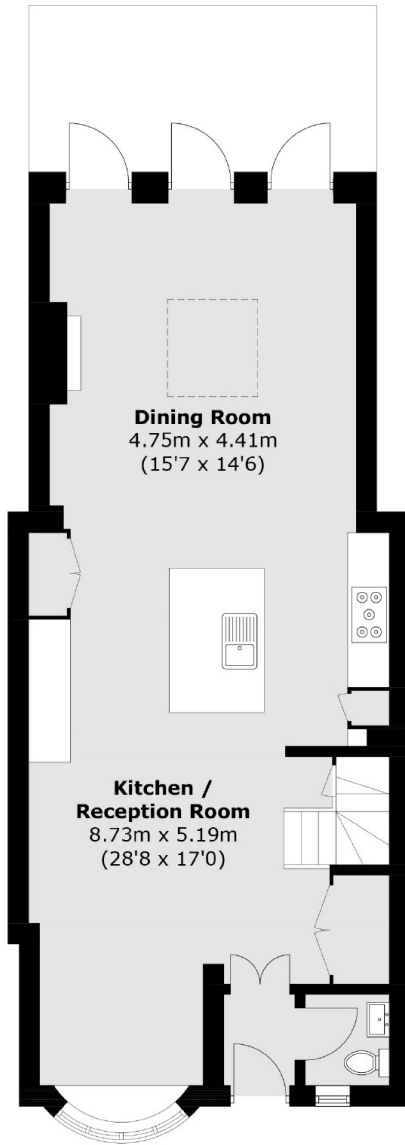
This three bedroom, two bathroom home has been beautifully refurbished throughout. The property features a large open-plan kitchen and dining area, a bright reception room leading to a private garden, and a top-floor master suite with shower room and excellent storage. Two additional bedrooms share a family shower room. Additional benefits include off-street parking.

Set within a gated courtyard in the sought-after Moore Park Estate, this property is a short walk to the amenities and transport links of Fulham Broadway.

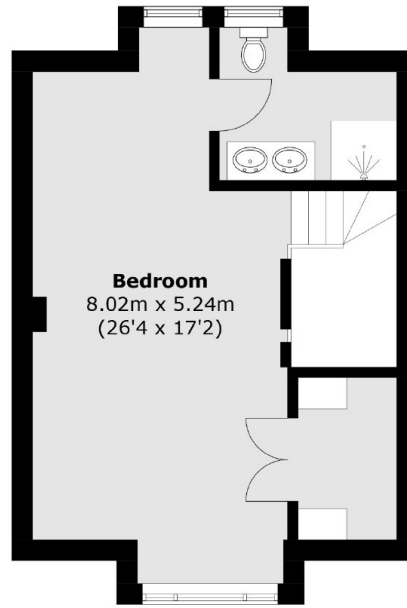
### Features

- Three Bedroom
- Full House
- Modern Interiors
- Gated Development
- Off-street Parking
- Private Garden

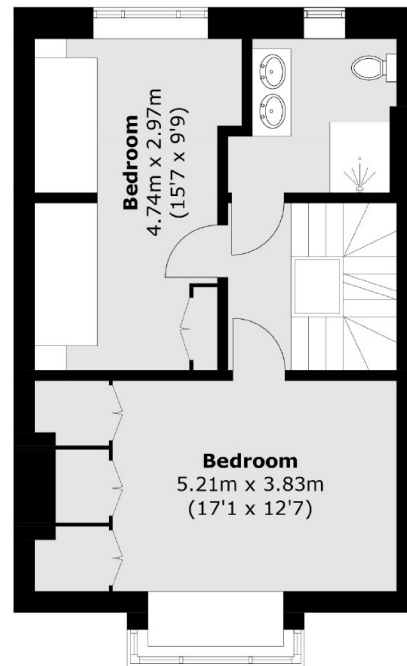
# Hilary Close, London, SW6



**Ground Floor**



**Second Floor**



**First Floor**

Total area (approx.): 143.0 sq. m (1,539.2 sq. ft)