



Park Street, SW6

£800,000

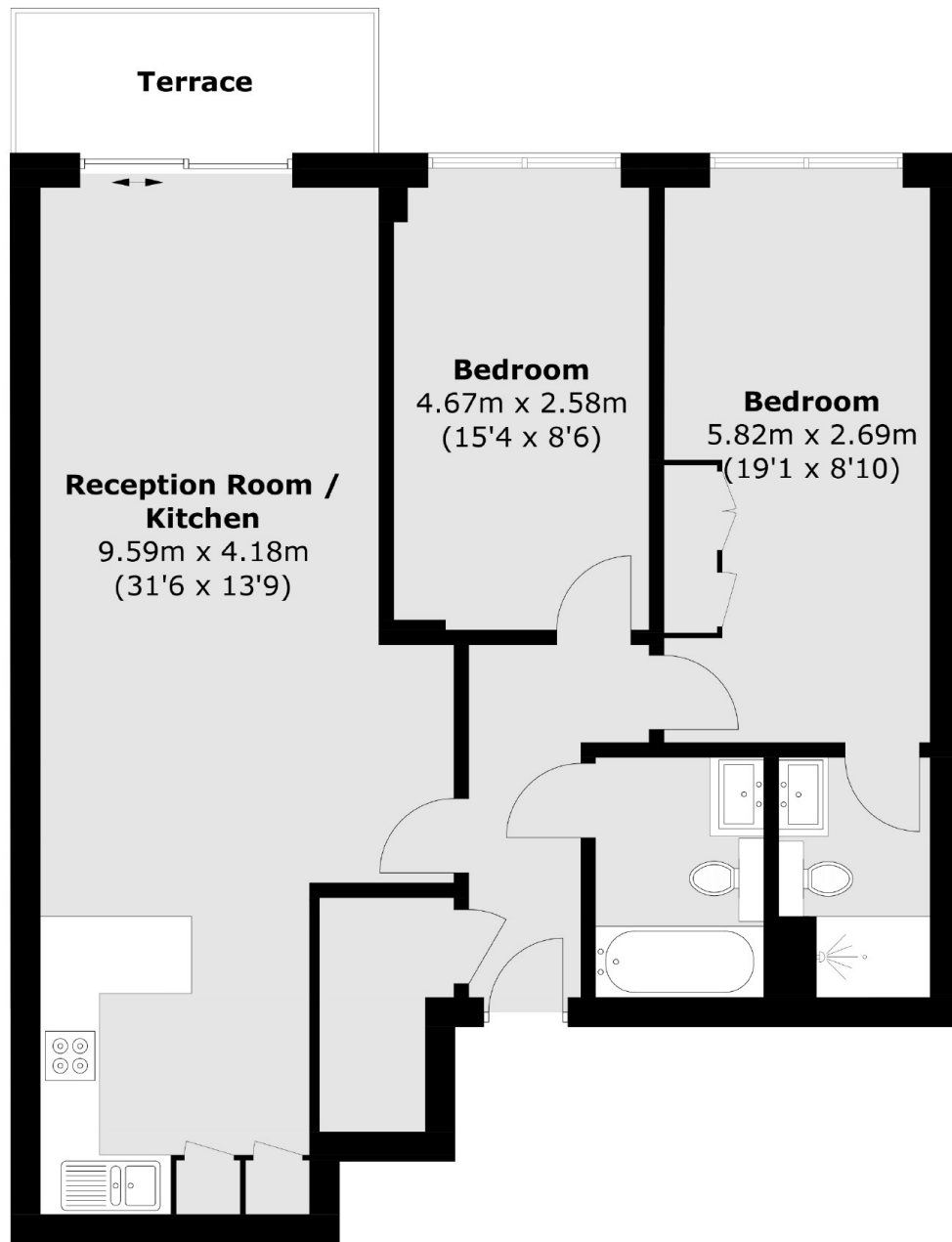
A well configured lateral two double bedroom, two bathroom apartment located within the prestigious Chelsea Creek. The property has an open plan kitchen living room with direct access out onto a private balcony. The property also benefits from a Concierge, Spa and Gym facilities and an underground parking space.

Chelsea Creek is ideally located on the banks of the River Thames, the property is easily accessible by Imperial Wharf Station, it is also moments away from Chelsea Harbour and Kings Road.

Features

- Two Double Bedrooms
- Concierge
- Private Balcony
- Two Bathrooms
- Underground Parking Space
- Gym/Swimming Pool

Park Street, London, SW6



Total area (approx.): 82.4 sq. m (886.9 sq. ft)
Terrace : 5.1 sq. m (54.9 sq. ft)

Dexters

Fulham
569 Fulham Road
London
SW6 1ES
Sales
020 7386 5386

Energy Rating: B. We aim to make our particulars both accurate and reliable. However they are not guaranteed; nor do they form part of an offer or contract. If you require clarification on any points then please contact us, especially if you're traveling some distance to view. Please note that appliances and heating systems have not been tested and therefore no warranties can be given as to their good working order.

 **RICS** | Regulated
Estate Agent
and Letting Agent

[dexters.co.uk](https://www.dexters.co.uk)