



## Brompton Park Crescent, SW6

### £400,000

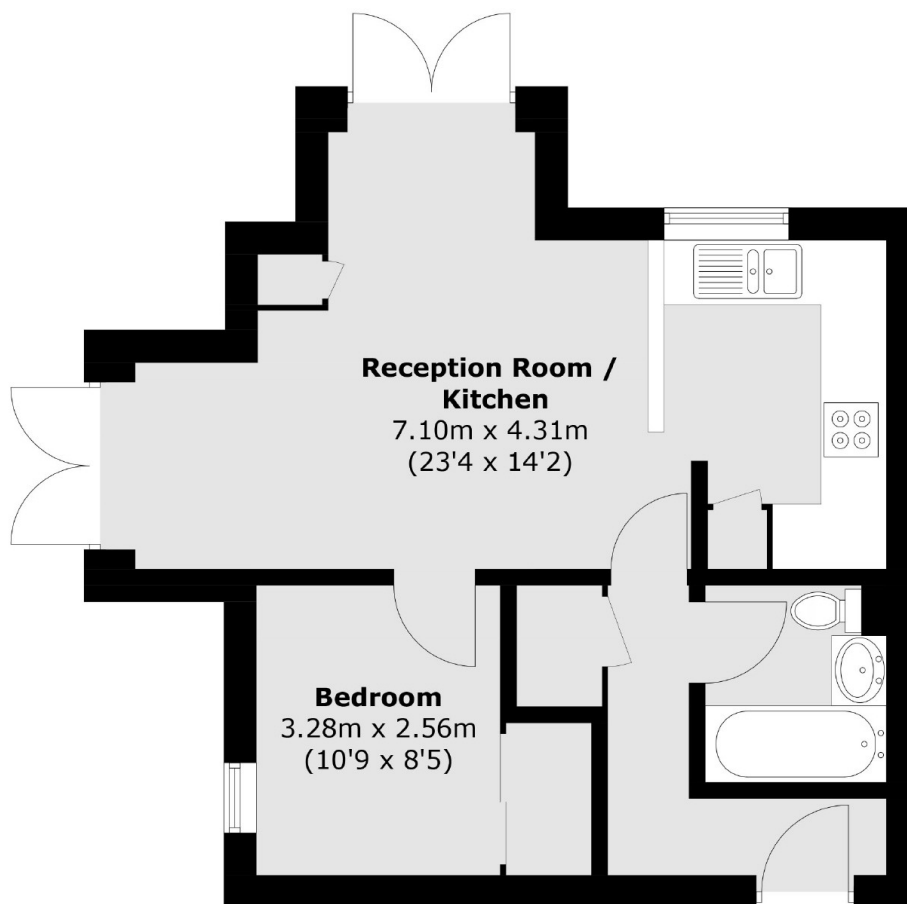
A well finished one bedroom flat located in this sought after gated development. The property offers an open plan kitchen living room with direct access out onto two private patio gardens. The apartment also benefits from designated parking, concierge, along with gym and swimming pool facilities.

Brompton Park Crescent is a quiet development surrounded by gardens and a park. It's moments away from West Brompton tube station.

### Features

- One Bedrooms
- Two Private Patios
- Parking Space
- Gated Complex
- Well Finished Throughout
- Swimming Pool/Gym

# Brompton Park Crescent, London, SW6



Total area (approx.): 39.1 sq. m (420.9 sq. ft)

## Dexters

Fulham  
569 Fulham Road  
London  
SW6 1ES  
Sales  
020 7386 5386

Energy Rating: C. We aim to make our particulars both accurate and reliable. However they are not guaranteed; nor do they form part of an offer or contract. If you require clarification on any points then please contact us, especially if you're traveling some distance to view. Please note that appliances and heating systems have not been tested and therefore no warranties can be given as to their good working order.

 **RICS** | Regulated  
Estate Agent  
and Letting Agent

[dexters.co.uk](https://www.dexters.co.uk)