

Columbia Gardens, SW6

£595,000

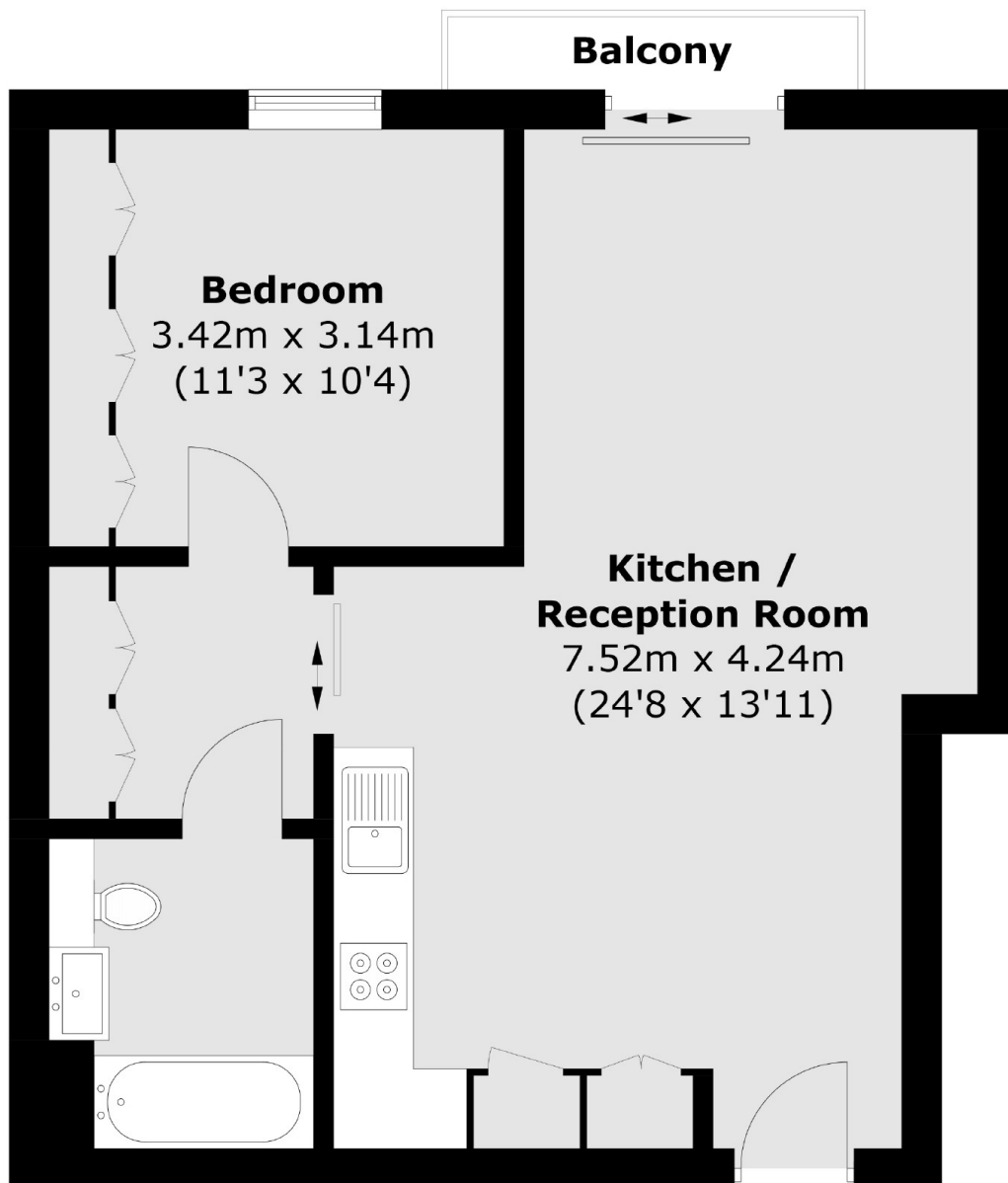
A stunning one bedroom apartment in this popular new build development. Boasting modern fixtures and fittings throughout the property comprises of a large open plan reception room, large bedroom with built in wardrobe space and a marble bathroom. The property also offers a 24 hour concierge service, a private residents' club with gym, swimming pool and sauna facilities.

Lillie Square is a new and exclusive development, ideally positioned for West Brompton station and many amenities of Earls Court, South Kensington and Chelsea.

Features

- One Double Bedroom
- Open Plan Kitchen Living
- Residents Pool
- Modern Appliances
- 24 Hour Concierge
- Private Balcony

Columbia Gardens, London, SW6



Total area (approx.): 51.9 sq. m (558.6 sq. ft)
Balcony: 1.6 sq. m (17.2 sq. ft)

Dexters

Fulham
569 Fulham Road
London
SW6 1ES
Sales
020 7386 5386

Energy Rating: B. We aim to make our particulars both accurate and reliable. However they are not guaranteed; nor do they form part of an offer or contract. If you require clarification on any points then please contact us, especially if you're traveling some distance to view. Please note that appliances and heating systems have not been tested and therefore no warranties can be given as to their good working order.

 **RICS** | Regulated
Estate Agent
and Letting Agent

dexters.co.uk