



Wandsworth Bridge Road, SW6

£695,000

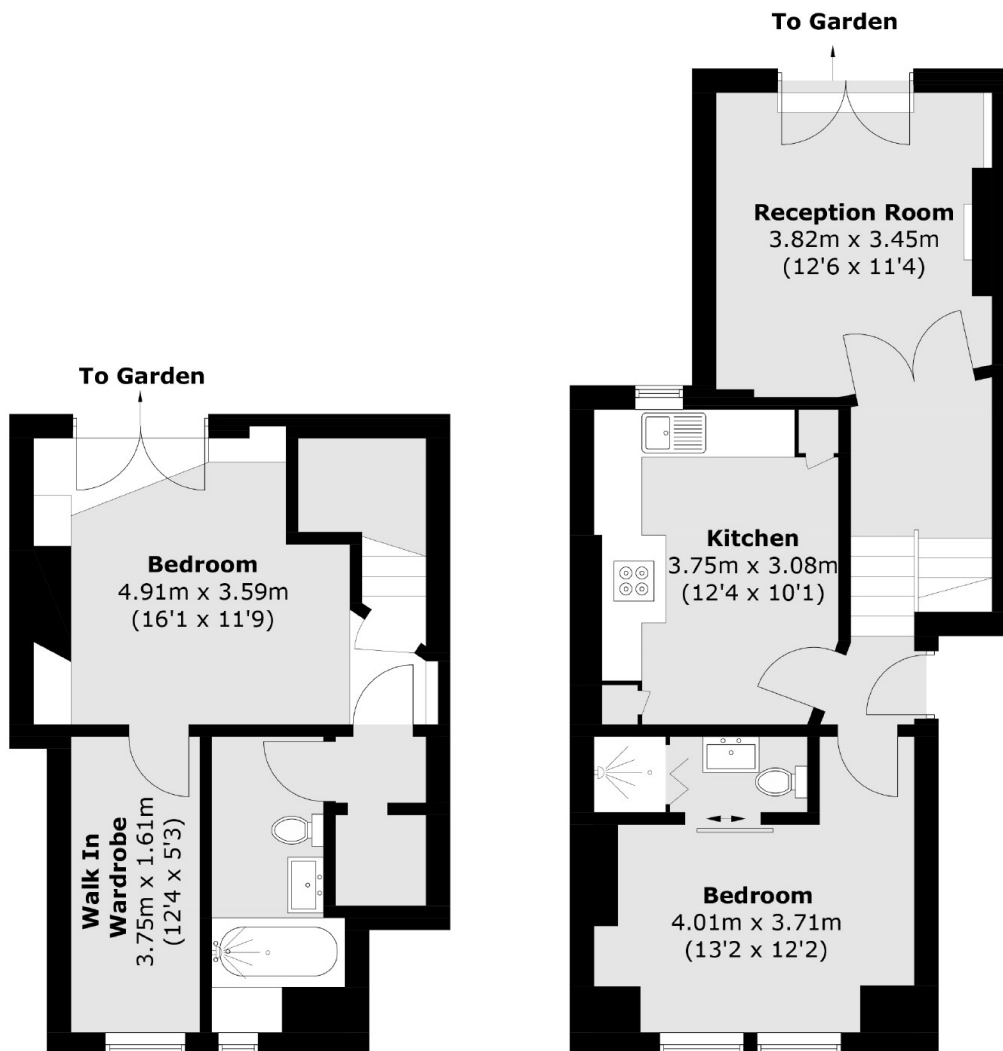
A spacious two double bedroom split level flat with a large private garden located in a Victorian conversion building. The flat boasts a separate reception room, two bathrooms and a fully integrated kitchen.

Situated in Sands End the property is conveniently located to benefit from the amenities and transport links of Wandsworth Bridge Road, Fulham Broadway and Parsons Green. The green space of South Park is only moments away.

Features

- Two Double Bedrooms
- Split Level Flat
- Large Private Garden
- Separate Kitchen
- Walk-In Wardrobe
- South Park

Wandsworth Bridge Road, London, SW6



Lower Ground Floor

Ground Floor

Total area (approx.): 81.5 sq. m (877.3 sq. ft)