

## Byam Street, SW6

### £550,000

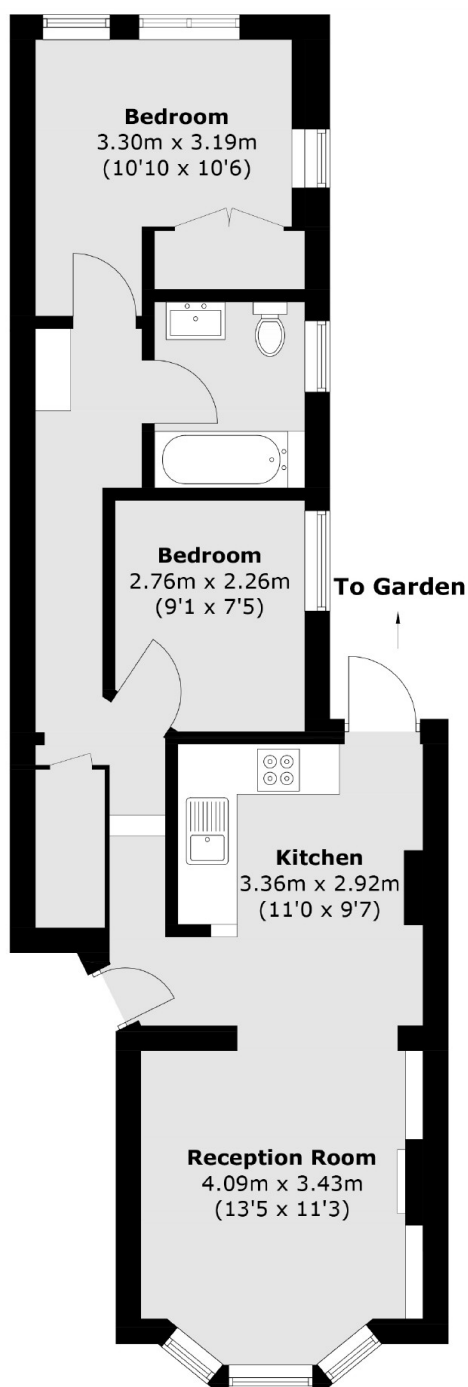
A fantastic ground floor garden flat on a quiet road in the Sands End area of Fulham. The property has two doubles bedrooms and an open plan kitchen/living area that leads out onto a private garden.

Byam Street is an idyllic tree lined road within Sands End. There are lots of amenities nearby with The Fulham Arms around the corner and Imperial Park at the end of the road with scenic river walks right on your door step. Imperial Wharf Station is only a short walk away.

### Features

- Ground Floor
- Two Bedroom
- Private Garden
- Potential To Extend (STPP)
- Bay Windows
- Sands End

# Byam Street, London, SW6



Total area (approx.): 54.3 sq. m (584.5 sq. ft)

## Dexters

Fulham  
569 Fulham Road  
London  
SW6 1ES  
Sales  
020 7386 5386

Energy Rating: TBC. We aim to make our particulars both accurate and reliable. However they are not guaranteed; nor do they form part of an offer or contract. If you require clarification on any points then please contact us, especially if you're traveling some distance to view. Please note that appliances and heating systems have not been tested and therefore no warranties can be given as to their good working order.

 **RICS** | Regulated  
Estate Agent  
and Letting Agent

[dexters.co.uk](https://www.dexters.co.uk)