



## Maltings Place, SW6

### £495,000

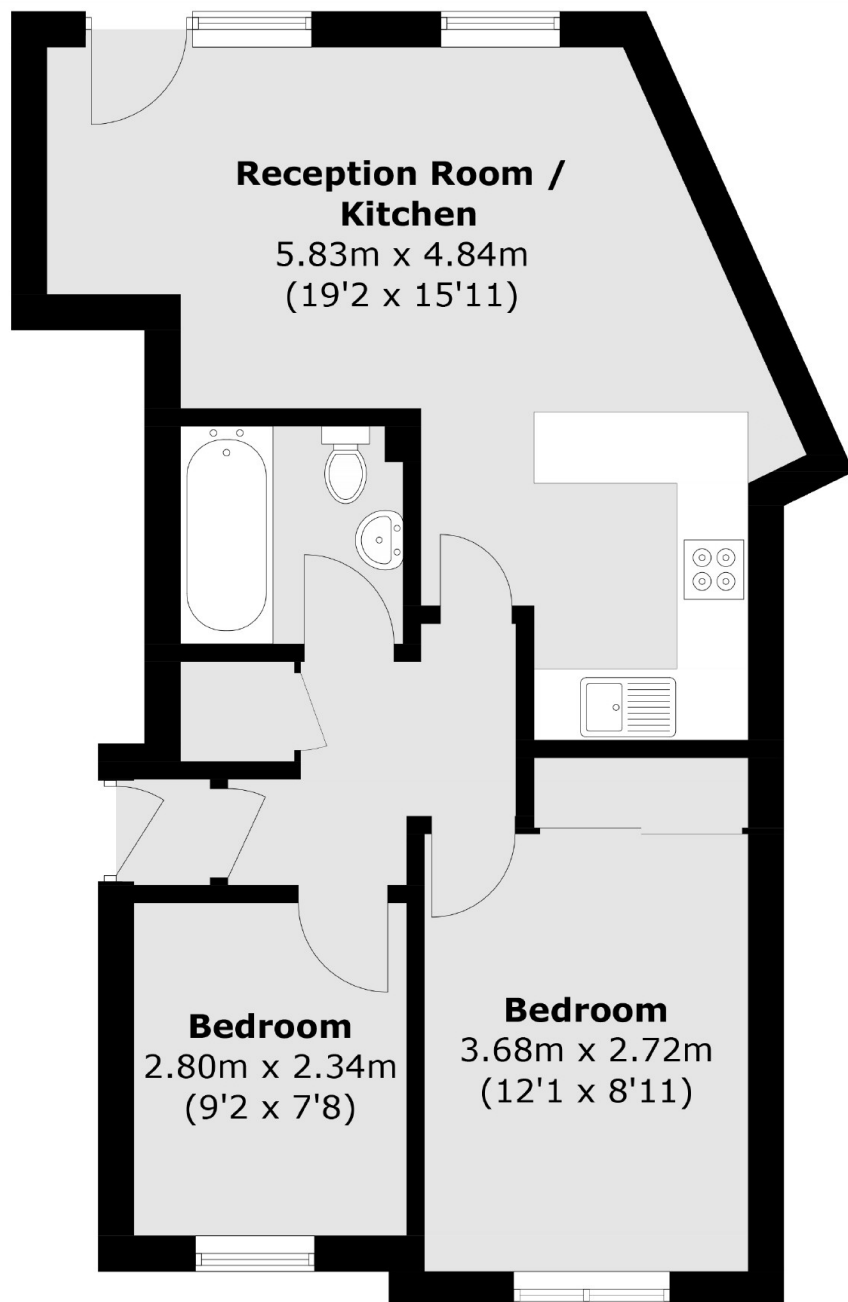
A spacious two bedroom apartment located in this popular gated development. The property offers an open plan kitchen living room, wood flooring as well as communal gardens and off street parking space.

Maltings Place is conveniently located within walking distance of the river and has excellent transport links including Fulham Broadway and Imperial Wharf overground. There are also plenty of amenities nearby, including the famous Kings Road which offers a wide range of shops, restaurants and boutiques.

### Features

- Two Double Bedrooms
- Gated Complex
- Open Plan Kitchen Living
- Long Lease
- Off Street Parking
- Communal Gardens

# Maltings Place, London, SW6



Total area (approx.): 51.7 sq. m ( 556.4 sq. ft)

## Dexters

Fulham  
569 Fulham Road  
London  
SW6 1ES  
Sales  
020 7386 5386

Energy Rating: D. We aim to make our particulars both accurate and reliable. However they are not guaranteed; nor do they form part of an offer or contract. If you require clarification on any points then please contact us, especially if you're traveling some distance to view. Please note that appliances and heating systems have not been tested and therefore no warranties can be given as to their good working order.

 **RICS** | Regulated  
Estate Agent  
and Letting Agent

[dexters.co.uk](https://www.dexters.co.uk)