



Haldane Road, SW6

£1,865,000

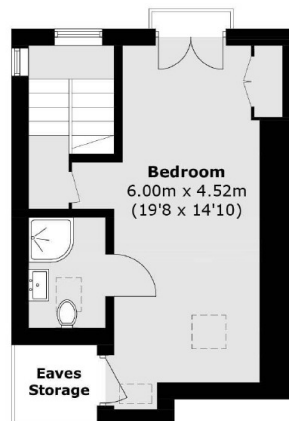
A meticulously refurbished Victorian terraced family home, located on a sought after one way street enviably positioned between Parsons Green and Fulham Broadway.

Haldane Road is a quiet tree lined street close to Fulham Broadway and Parsons Green. It is made up of Victorian and Georgian period homes and is ideally situated for the amenities and transport links of the whole of Fulham.

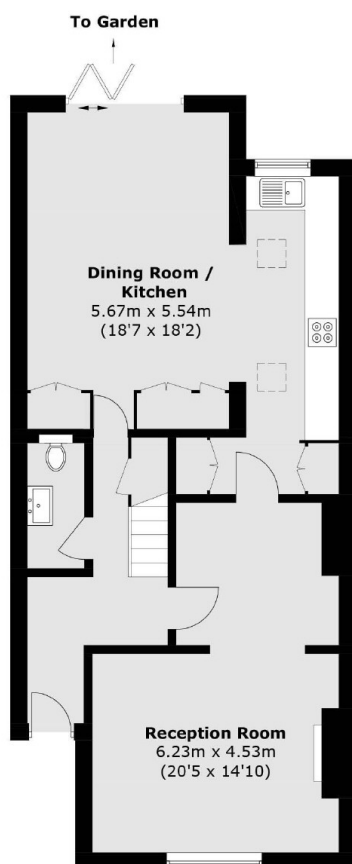
Features

- Four Double Bedrooms
- South West Facing Garden
- Stylish Interiors
- Immaculately Refurbished
- Abundance Of Living Space
- Idyllic Street

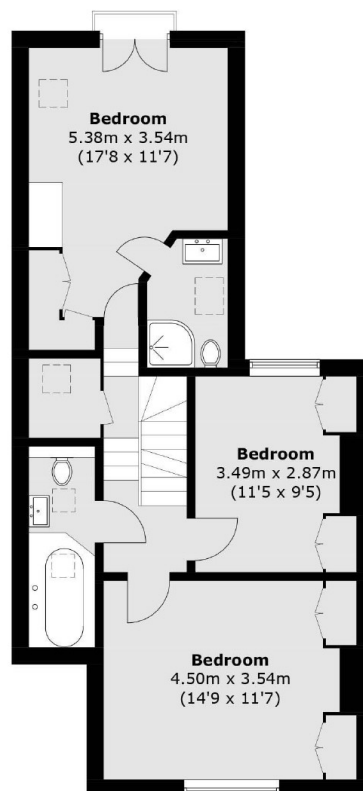
Haldane Road, London, SW6



Second Floor



Ground Floor



First Floor

Total area (approx.): 154.4 sq. m (1,661.9 sq. ft)
(Excluding Eaves Storage)