



## Tamworth Street, SW6

£2,000,000

An immaculately finished four double bedroom family house located on a quiet residential street that was renovated back to the brick work in 2014.

Tamworth Street is a quiet residential street within close distance to the array of local amenities and transport links of Fulham Broadway, West Brompton and Earls Court. The green space of Eel Brook Common is only a short walk away.

### Features

- Four Double Bedrooms
- Large Private Garden
- Abundance of Living Space
- Immaculately Refurbished
- Over 2300 Square Feet
- Potential to Extend ( STPP )



## Tamworth Street, SW6

The ground floor offers an abundance of living space, the home has a formal front reception room with its original fire place restored. The hallway leads into an enviable fully extended entertaining space with a fully integrated open plan kitchen / dining area that flows into an additional living area which leads out to a larger than usual Fulham sized garden. The house further benefits from an additional W.C. And Utility room on the ground floor.

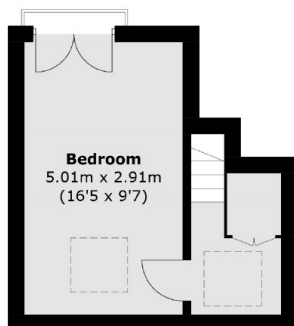
The lower ground floor offers a spacious cellar with potential to excavate deeper and extend further ( STPP )

On the first floor you will find a well designed principle suite, with both a walk in wardrobe and en-suite bathroom. There is a further double bedroom with en suite on this level.

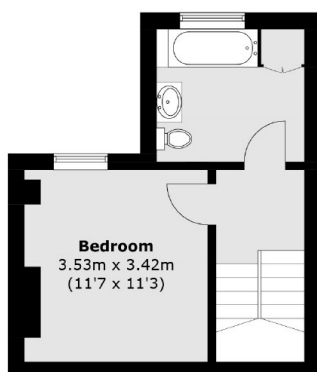
The top floor of the house offers two further double bedrooms and further benefits from a large family bathroom.



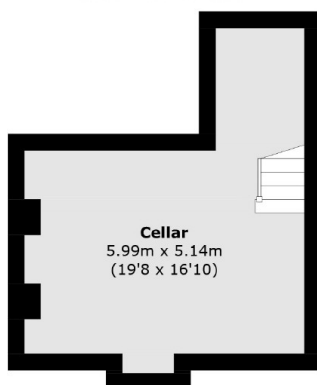
# Tamworth Street, London, SW6



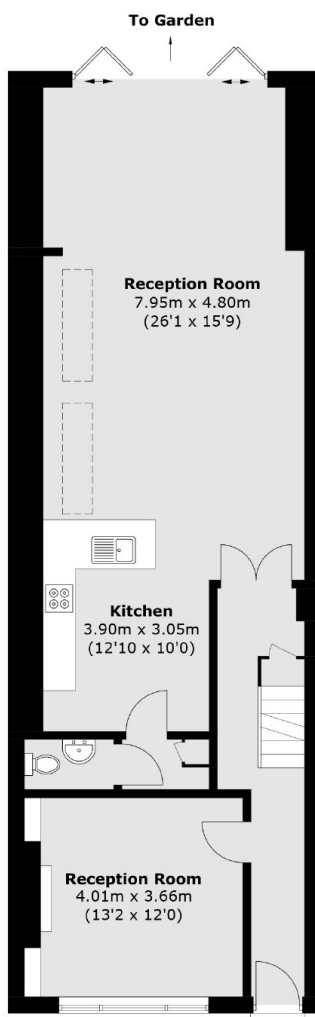
**Split Level Second Floor**



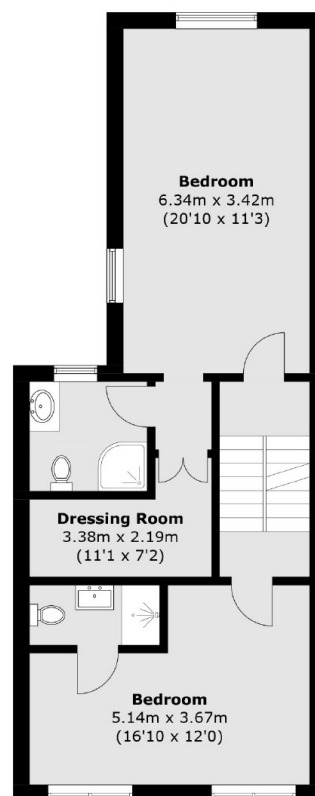
**Second Floor**



**Cellar**



**Ground Floor**



**First Floor**

Total area (approx.): 215.3 sq. m (2,317.5 sq. ft)  
(Including Cellar)