



Peterborough Road, SW6

£1,300,000

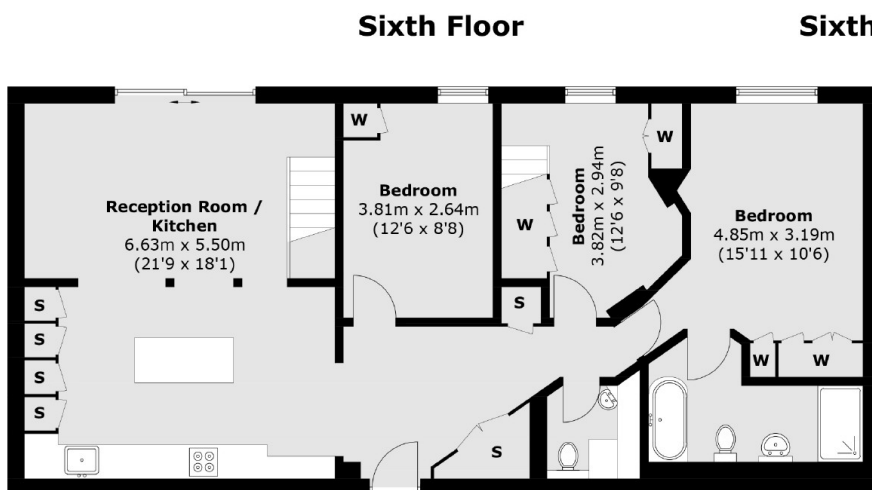
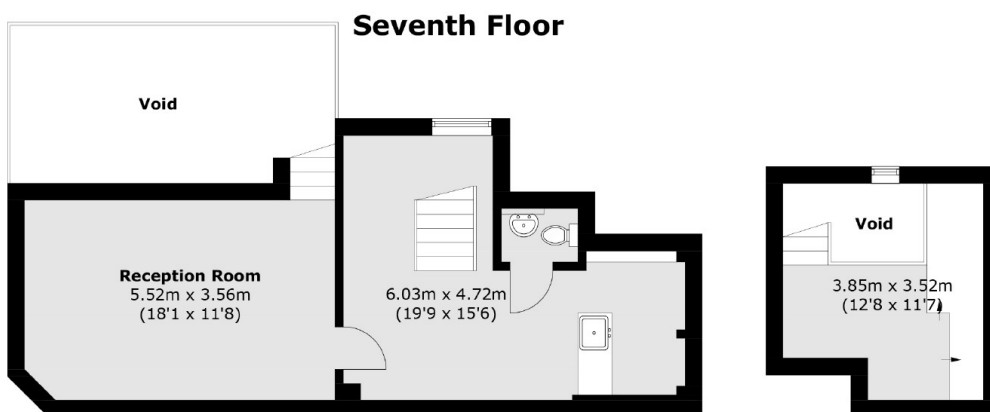
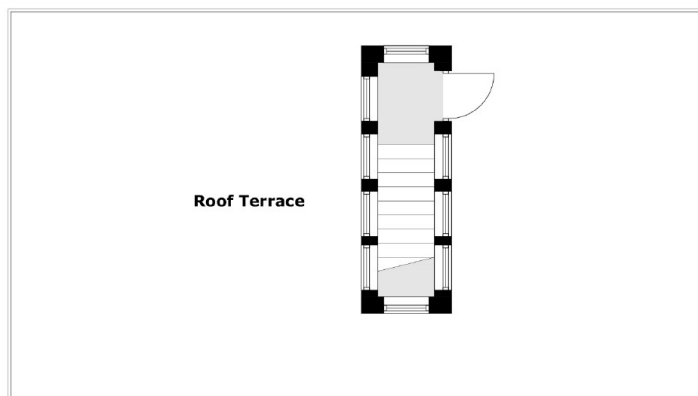
A stunningly designed split level three-bedroom apartment. This fifth-floor apartment comprises three bedrooms, three luxury bathrooms and an open plan spacious kitchen/reception room allowing great space for entertaining. The flat further benefits from a spacious 821 sqft wrap around roof terrace with panoramic views of the city.

The Piper Building is found within close proximity to the transport links and amenities of Parsons Green, Wandsworth Bridge Road and Imperial Wharf.

Features

- Designated Parking Space
- Exceptional Ceiling Height
- Concierge
- Large Private Terrace
- Three Bedrooms
- Abundance Of Living Space

Peterborough Road, London, SW6



Fifth Floor
Total area (approx.): 154.8 sq. m (1,666.1 sq. ft)
(Excluding Void)
Roof Terrace: 76.3 sq. m (821.2 sq. ft)

Dexters

Fulham
569 Fulham Road
London
SW6 1ES
Sales
020 7386 5386

Energy Rating: C. We aim to make our particulars both accurate and reliable. However they are not guaranteed; nor do they form part of an offer or contract. If you require clarification on any points then please contact us, especially if you're traveling some distance to view. Please note that appliances and heating systems have not been tested and therefore no warranties can be given as to their good working order.

RICS Regulated
Estate Agent
and Letting Agent

dexters.co.uk