



Rosebury Road, SW6

£625,000

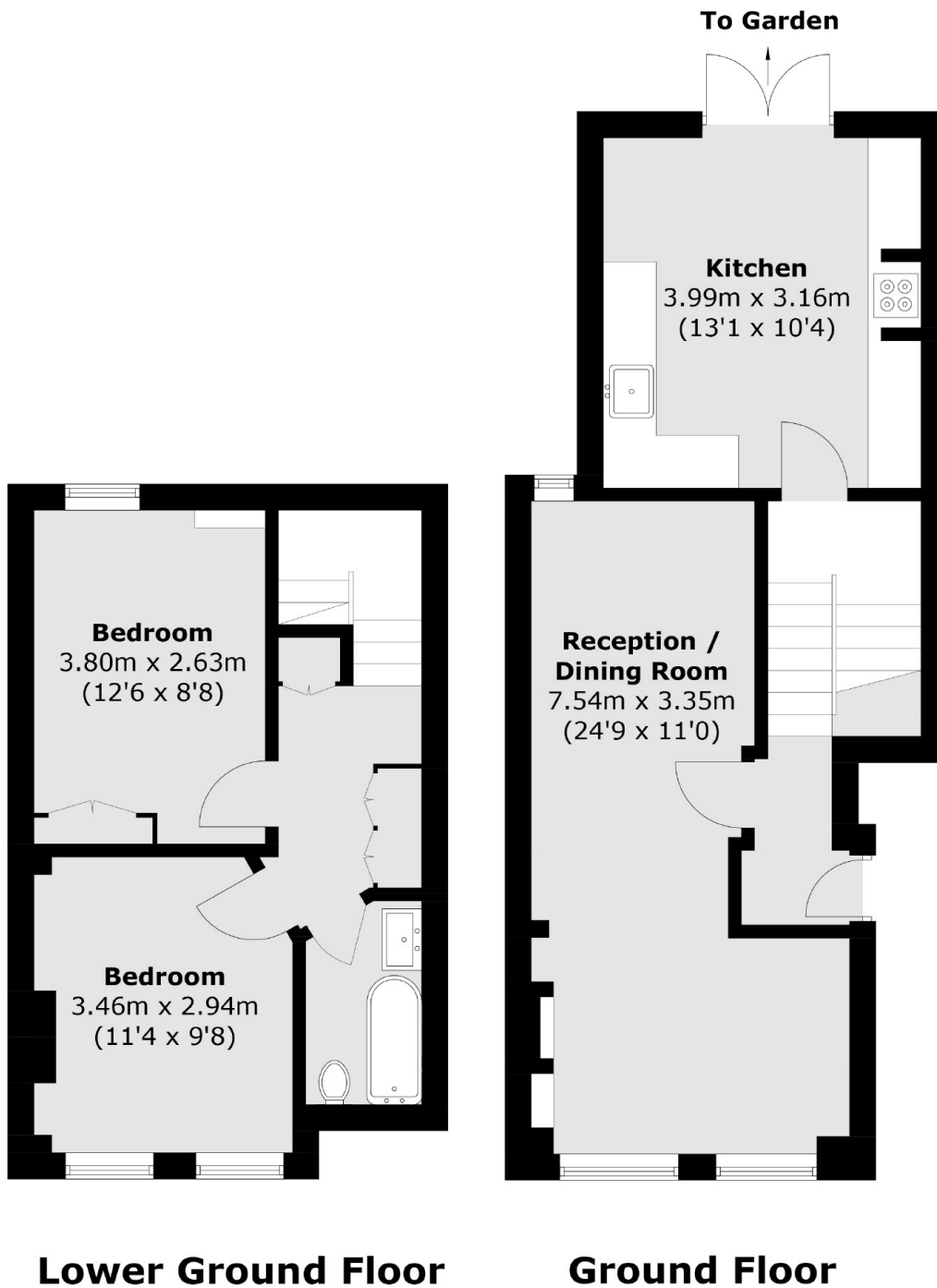
This spacious two double bedroom flat is split over two levels offering an abundance of living space including a double reception room to the front with high ceilings. The flat boasts a separate kitchen leading out to a shared garden.

Situated in the "bury triangle" the property is conveniently located to benefit from the amenities and transport links of Wandsworth Bridge Road, Fulham Broadway and Parsons Green.

Features

- Two Double Bedrooms
- Double Reception Room
- Well Finished Throughout
- Bury Triangle
- Split Level
- Long Lease

Rosebury Road, London, SW6



Total area (approx.): 75.6 sq. m (813.8 sq. ft)

Dexters

Fulham
569 Fulham Road
London
SW6 1ES
Sales
020 7386 5386

Energy Rating: TBC. We aim to make our particulars both accurate and reliable. However they are not guaranteed; nor do they form part of an offer or contract. If you require clarification on any points then please contact us, especially if you're traveling some distance to view. Please note that appliances and heating systems have not been tested and therefore no warranties can be given as to their good working order.

 **RICS** | Regulated
Estate Agent
and Letting Agent

[dexters.co.uk](https://www.dexters.co.uk)