



## Wandsworth Bridge Road, SW6

### £650,000

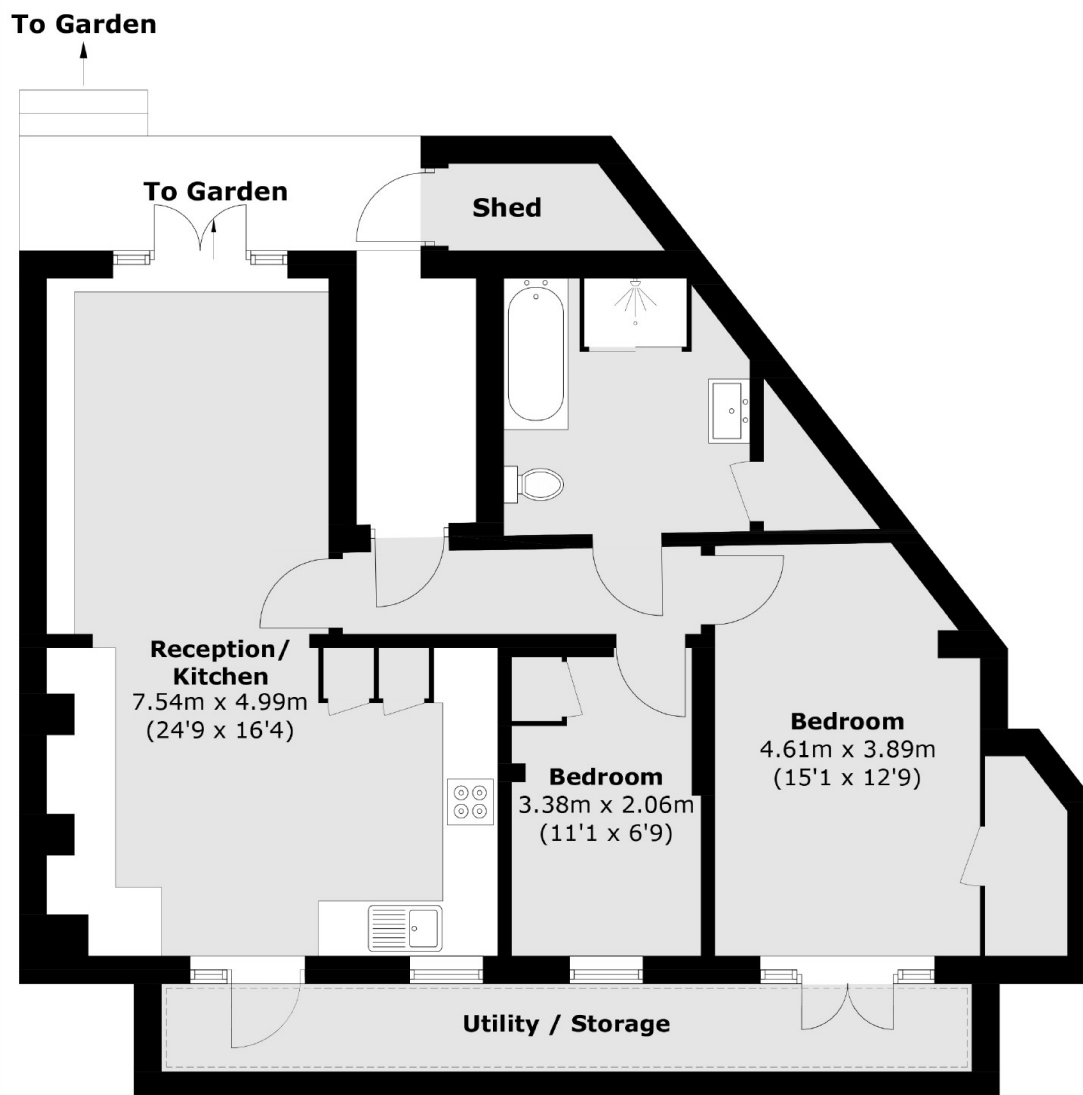
A well proportioned, newly renovated two bedroom garden flat. The property benefits from ample storage throughout as well as a four piece bathroom and a large open plan kitchen/living/dining space that leads out onto a idyllic private garden .

Situated in the "bury triangle" the property is conveniently located to benefit from the amenities and transport links of Wandsworth Bridge Road, Fulham Broadway and Parsons Green. The green space of South Park is only moments away.

### Features

- Two Bedrooms
- Large Private Garden
- Newly Refurbished
- Abundance Of Storage
- No Chain
- Bury Triangle

# Wandsworth Bridge Road, London, SW6



Total area (approx.): 76.2 sq. m (820.2 sq. ft)  
(Excluding Shed)

## Dexters

Fulham  
569 Fulham Road  
London  
SW6 1ES  
Sales  
020 7386 5386

Energy Rating: D. We aim to make our particulars both accurate and reliable. However they are not guaranteed; nor do they form part of an offer or contract. If you require clarification on any points then please contact us, especially if you're traveling some distance to view. Please note that appliances and heating systems have not been tested and therefore no warranties can be given as to their good working order.

 **RICS** | Regulated  
Estate Agent  
and Letting Agent

[dexters.co.uk](https://www.dexters.co.uk)