



## Wardo Avenue, SW6

### £950,000

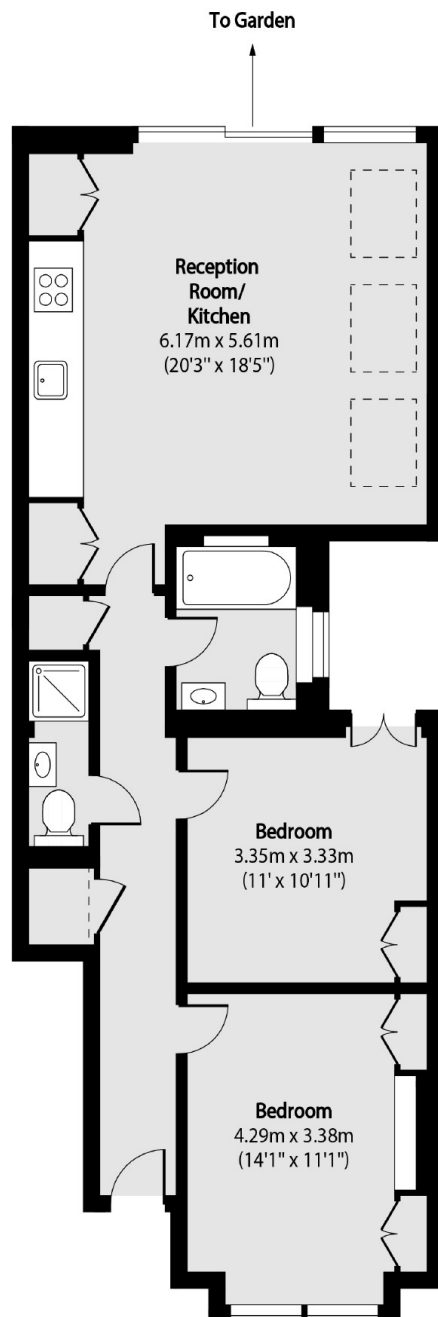
A best in class two bedroom two bathroom garden flat, with its own private entrance located on a popular quiet residential street. The flat boasts an open plan kitchen living with direct access via bi folds out onto a private patio garden.

Wardo Avenue is a quiet residential road well positioned within the charming 'Munster Village' area of Fulham. It is conveniently located to a range of local shops and restaurants lining both the Munster Road and Fulham Road. Also close by is the popular open space of Bishops Park, together with the Thames Path.

### Features

- Two Double Bedrooms
- Immaculately Refurbished
- Share Of Freehold
- Private Patio
- Own Front Door
- Open Plan Kitchen Living

# Wardo Avenue, London, SW6



Total area (approx): 75.71 sq m (815 sq. ft)

## Dexters

Fulham  
569 Fulham Road  
London  
SW6 1ES  
Sales  
020 7386 5386

Energy Rating: C. We aim to make our particulars both accurate and reliable. However they are not guaranteed; nor do they form part of an offer or contract. If you require clarification on any points then please contact us, especially if you're traveling some distance to view. Please note that appliances and heating systems have not been tested and therefore no warranties can be given as to their good working order.

 **RICS** | Regulated  
Estate Agent  
and Letting Agent

[dexters.co.uk](https://www.dexters.co.uk)