



## New Kings Road, SW6

### £850,000

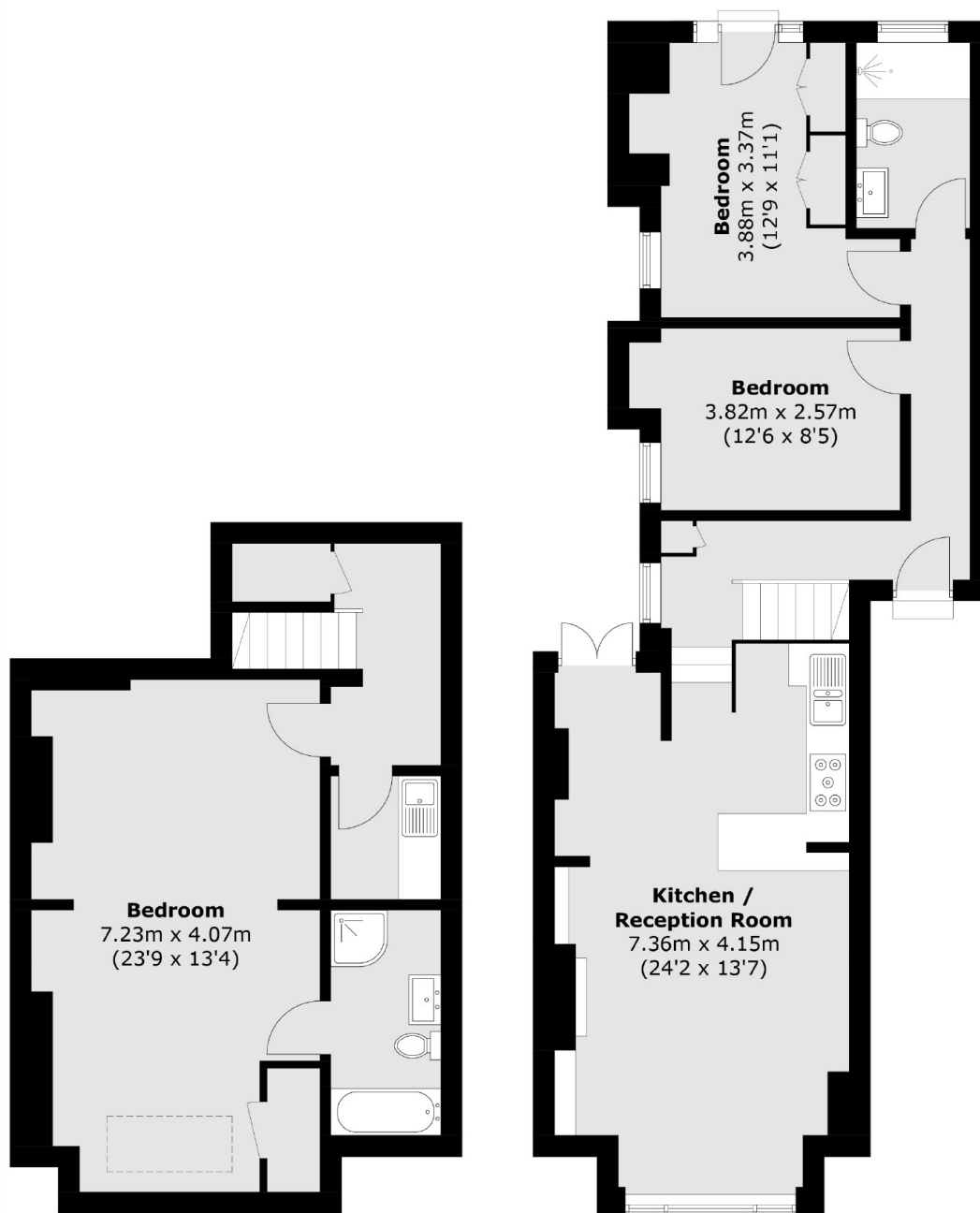
An extremely spacious three bedroom split level flat located in a red brick Victorian conversion close to Parsons Green and River Thames. The flat spread over 1200 sq ft is immaculately finished throughout with an open plan kitchen living room and direct access out into a private garden.

Enviably located between the amenities and transport links of both Parsons Green and Putney Bridge. The green spaces of Hurlingham Park and Bishops Park are only a short walk away.

### Features

- Three Double Bedrooms
- Immaculately Finished
- Split Level Conversion
- Private Garden
- Open Plan Kitchen Living
- Share Of Freehold

# New Kings Road, London, SW6



**Basement**

**Ground Floor**

Total area (approx.): 112.3 sq. m (1,208.8 sq. ft)  
(Including Basement)

**Dexters**

Fulham  
569 Fulham Road  
London  
SW6 1ES  
Sales  
020 7386 5386

Energy Rating: C. We aim to make our particulars both accurate and reliable. However they are not guaranteed; nor do they form part of an offer or contract. If you require clarification on any points then please contact us, especially if you're traveling some distance to view. Please note that appliances and heating systems have not been tested and therefore no warranties can be given as to their good working order.

 **RICS** | Regulated  
Estate Agent  
and Letting Agent

[dexters.co.uk](https://www.dexters.co.uk)