



## New Kings Road, SW6

£899,000

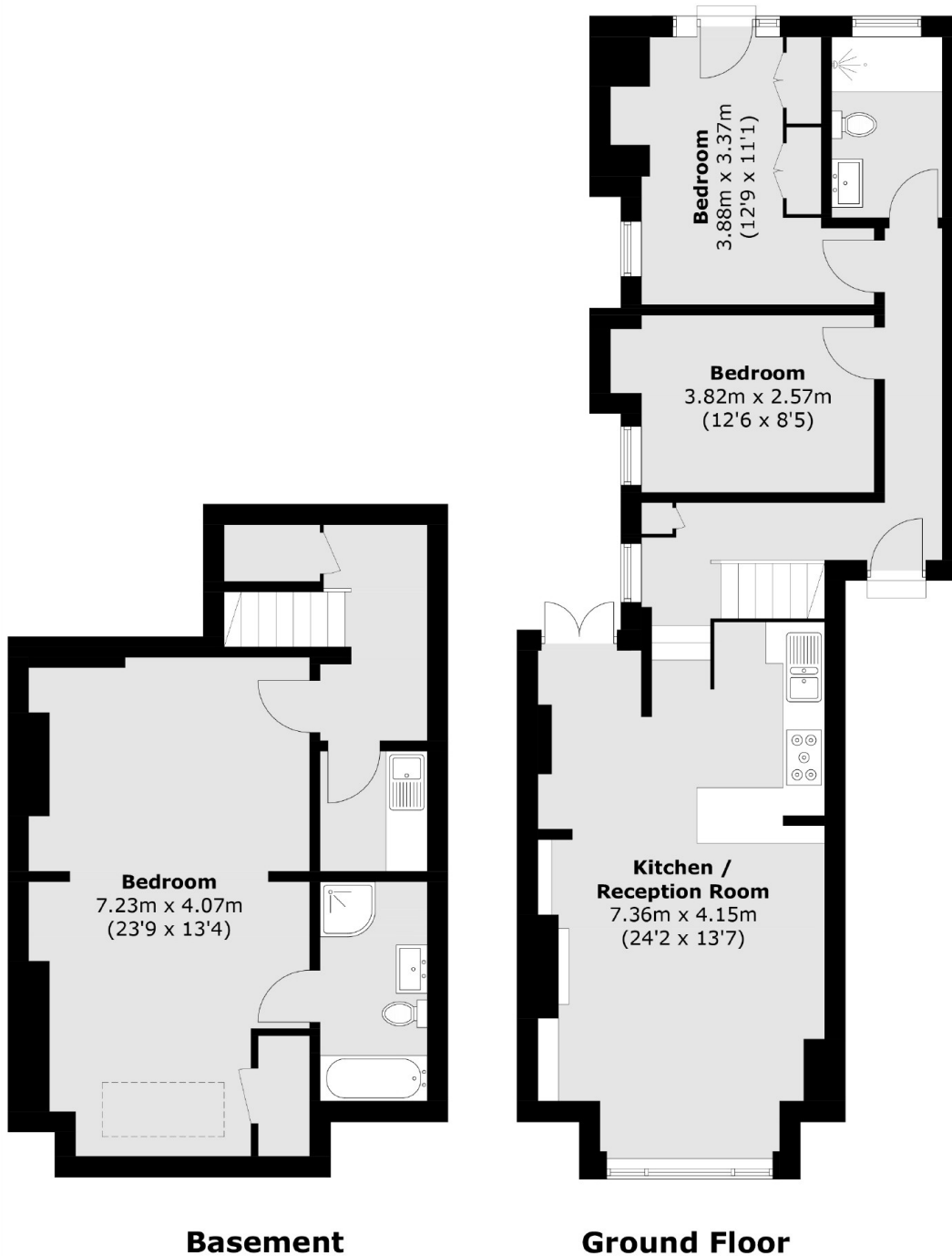
An extremely spacious three bedroom split level flat located in a red brick Victorian conversion close to Parsons Green and River Thames. The flat spread over 1200 sq ft is immaculately finished throughout with an open plan kitchen living room and direct access out into a private garden.

Enviably located between the amenities and transport links of both Parsons Green and Putney Bridge. The green spaces of Hurlingham Park and Bishops Park are only a short walk away.

### Features

- Three Double Bedrooms
- Immaculately Finished
- Split Level Conversion
- Private Garden
- Open Plan Kitchen Living
- Share Of Freehold

# New Kings Road, London, SW6



Total area (approx.): 112.3 sq. m (1,208.8 sq. ft)  
(Including Basement)