



Sullivan Road, SW6

£1,250,000

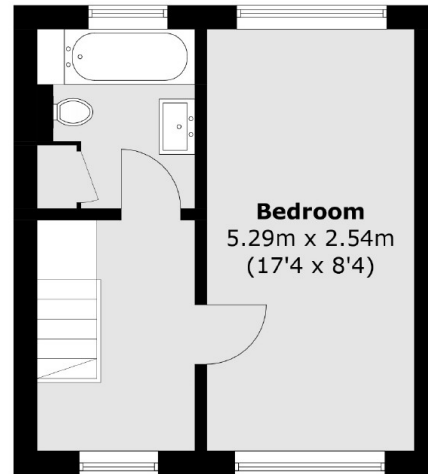
A beautifully presented, bright and spacious three double bedroom family home located on one of Fulham's premier roads and ideally positioned for easy access to the many prestigious local schools including Thomas's and L'école Marie d'Orliac. The house benefits from potential to extend and expand further (STPP).

Sullivan Road is surrounded by many local amenities within this desirable location and is nestled between the green open spaces of both South Park and Hurlingham Park. It is a short stroll to Parsons Green Tube station and close to all of the bars, shops, cafés and restaurants of both the Wandsworth Bridge Road and Parsons Green.

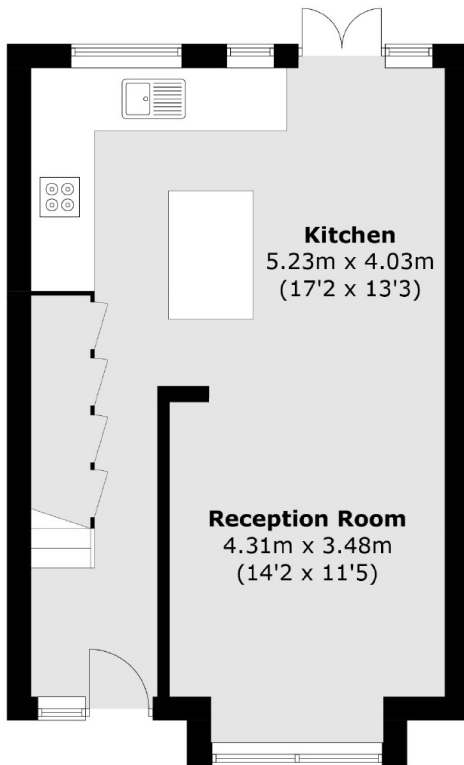
Features

- Three Double Bedrooms
- Large Private Garden
- Potential To Extend (STPP)
- South Park
- Quiet Residential Street
- Immaculately Finished

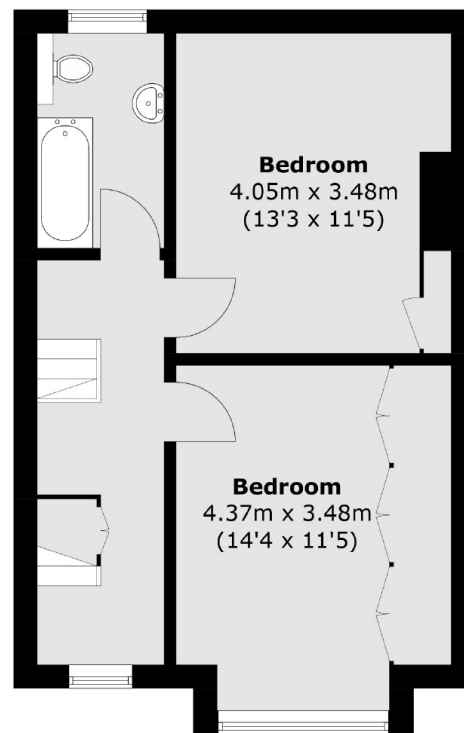
Sullivan Road,
London, SW6



Second Floor



Ground Floor



First Floor

Total area (approx.): 111.6 sq. m (1,201.2 sq. ft)

Dexters

Fulham
569 Fulham Road
London
SW6 1ES
Sales
020 7386 5386

Energy Rating: D. We aim to make our particulars both accurate and reliable. However they are not guaranteed; nor do they form part of an offer or contract. If you require clarification on any points then please contact us, especially if you're traveling some distance to view. Please note that appliances and heating systems have not been tested and therefore no warranties can be given as to their good working order.

 **RICS** | Regulated
Estate Agent
and Letting Agent

[dexters.co.uk](https://www.dexters.co.uk)