



## Sullivan Road, SW6

### £1,350,000

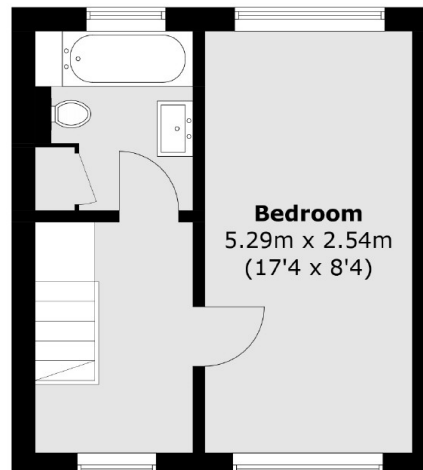
A beautifully presented, bright and spacious three double bedroom family home located on one of Fulham's premier roads and ideally positioned for easy access to the many prestigious local schools including Thomas's and L'école Marie d'Orliac. The house benefits from potential to extend and expand further (STPP).

Sullivan Road is surrounded by many local amenities within this desirable location and is nestled between the green open spaces of both South Park and Hurlingham Park. It is a short stroll to Parsons Green Tube station and close to all of the bars, shops, cafés and restaurants of both the Wandsworth Bridge Road and Parsons Green.

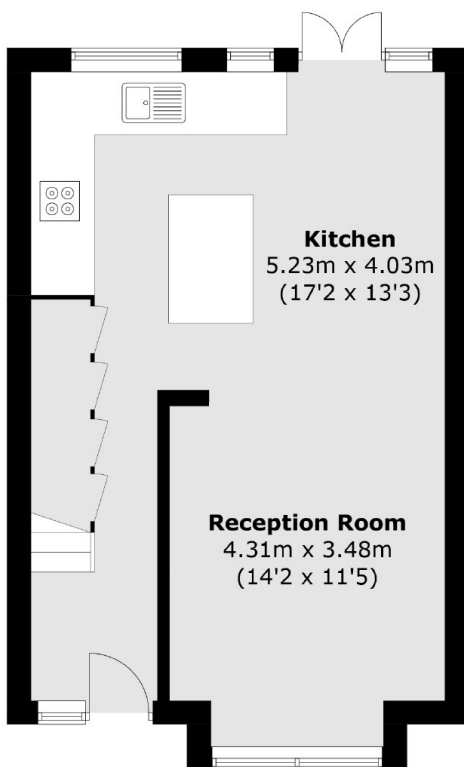
### Features

- Three Double Bedrooms
- Large Private Garden
- Potential To Extend ( STPP )
- South Park
- Quiet Residential Street
- Immaculately Finished

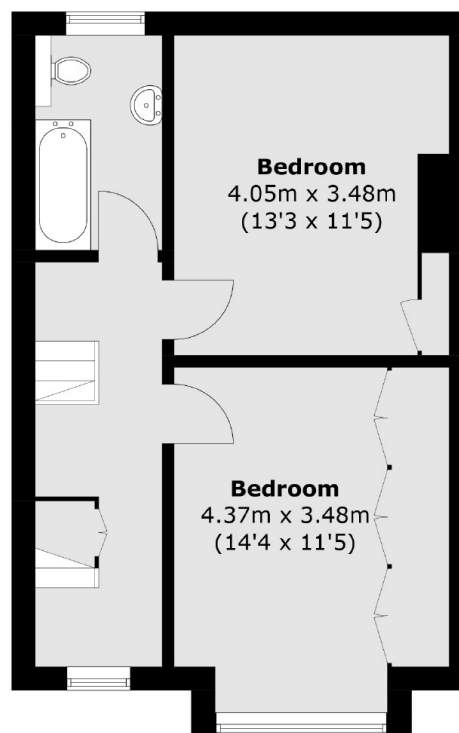
# Sullivan Road, London, SW6



**Second Floor**



**Ground Floor**



**First Floor**

Total area (approx.): 111.6 sq. m (1,201.2 sq. ft)