



## Fulham Palace Road, SW6

### £850,000

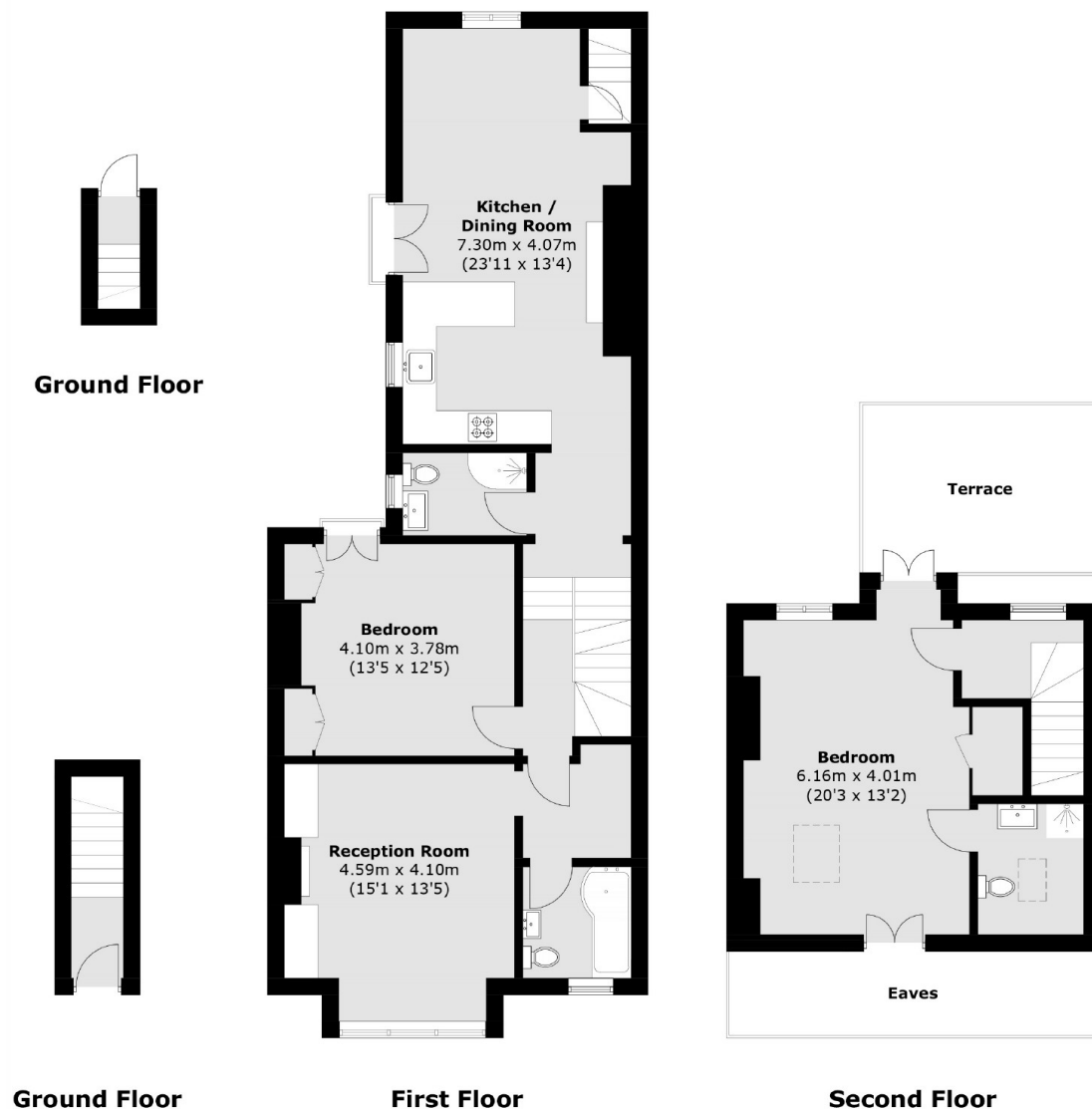
A fantastic opportunity to acquire this larger than average split level maisonette. The property has a sizeable open plan kitchen/reception that has direct access to a large private west facing garden as well three double bedrooms, three bathrooms, and an additional terrace off the top floor. There is a private off street parking space outside the front of the property.

Enviably located in the heart of the Alphabet Streets and near to the River Thames as well as Bishops Park. The property is equal distance to the amenities and transport links of Putney Bridge and Hammersmith Broadway.

### Features

- End Of Terrace
- Off Street Parking
- Three Double Bedrooms
- Private West Facing Garden
- Three Bathrooms
- Private West Facing Terrace

# Fulham Palace Road, London, SW6



Total area (approx.): 127.5 sq. m (1,372.4 sq. ft)  
Terrace : 12.5 sq. m (134.5 sq. ft)  
(Excluding Eaves)