



## Perrymead Street, SW6

£2,750,000

A rare opportunity to purchase an unmodernised Lion House located within the prestigious Peterborough estate.

Located within close proximity to the amenities and transport links of Parsons Green and Fulham Broadway.

### Features

- Lion House
- Four Double Bedrooms
- Formal Living Room
- Dining Room
- Potential To Extend Further
- Large Private Garden





## Perrymead Street, SW6

The ground floor comprises of a large living room, with ornate original features and large bay window. This leads onto a formal dining room which is next door to the kitchen. A side door leads out onto a spacious private garden. The house also benefits from a substantial lower ground floor level which has a utility room and storage area.

The first floor of the house has a formal living space, perfect for entertaining. There is also a family bathroom and double bedroom.

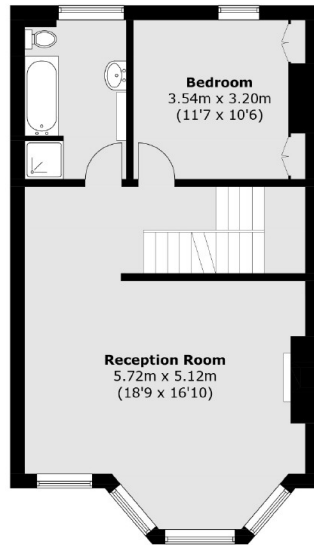
Three double bedrooms are across the top floor, including a principal suite with lots of storage and en-suite bathroom.



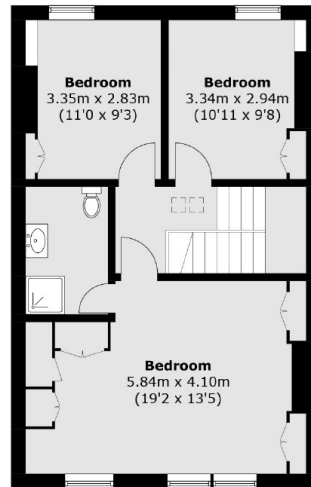




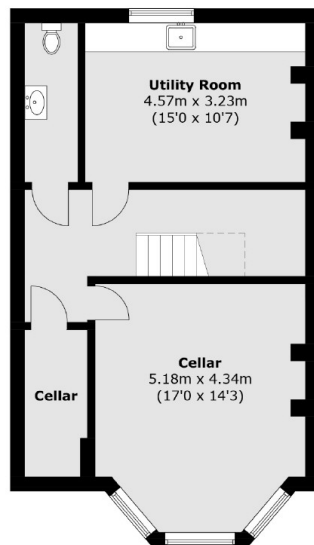
# Perrymead Street, London, SW6



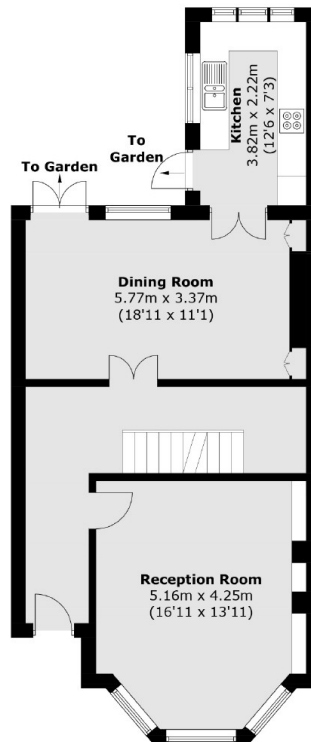
First Floor



Second Floor



Lower Ground Floor



Ground Floor

Total area (approx.): 235.2 sq. m (2,531.6 sq. ft)