



## Townmead Road, SW6

### £490,000

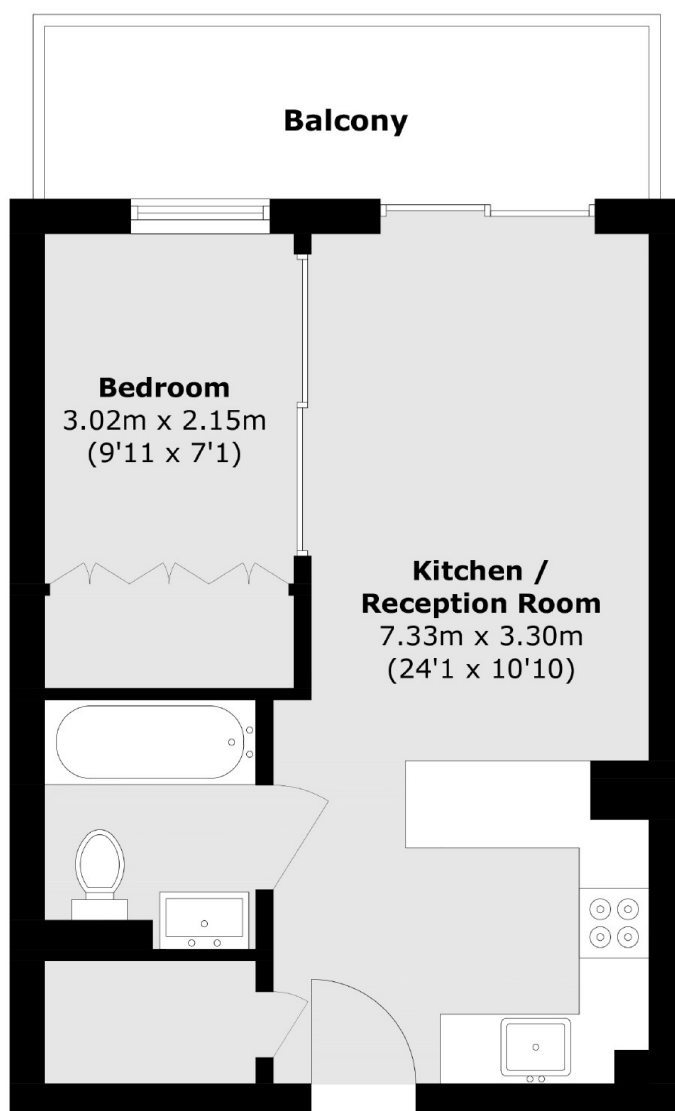
A one bedroom apartment with private balcony finished to a high specification. It has been designed to allow open living with a sliding bedroom door, large reception room with integrated ceiling speakers, a well equipped kitchen with granite work surfaces and storage. The bathroom has marble surfaces, mirrors and Villeroy & Boch suite.

Located within this sought after development, the property is next to Imperial Wharf Station and is within close proximity to Fulham Broadway and Chelsea.

### Features

- Private Balcony
- 24 Hour Concierge
- Gym
- One Bedroom Apartment
- Fully Integrated Kitchen
- Imperial Wharf Development

# Townmead Road, London, SW6



Total area (approx.): 38.1 sq. m (410.1 sq. ft)

Balcony area (approx.): 7.7 sq. m (82.8 sq. ft)

## Dexters

Fulham  
569 Fulham Road  
London  
SW6 1ES  
Sales  
020 7386 5386

Energy Rating: B. We aim to make our particulars both accurate and reliable. However they are not guaranteed; nor do they form part of an offer or contract. If you require clarification on any points then please contact us, especially if you're traveling some distance to view. Please note that appliances and heating systems have not been tested and therefore no warranties can be given as to their good working order.

 **RICS** | Regulated  
Estate Agent  
and Letting Agent

[dexters.co.uk](https://www.dexters.co.uk)