



New Kings Road, SW6

£725,000

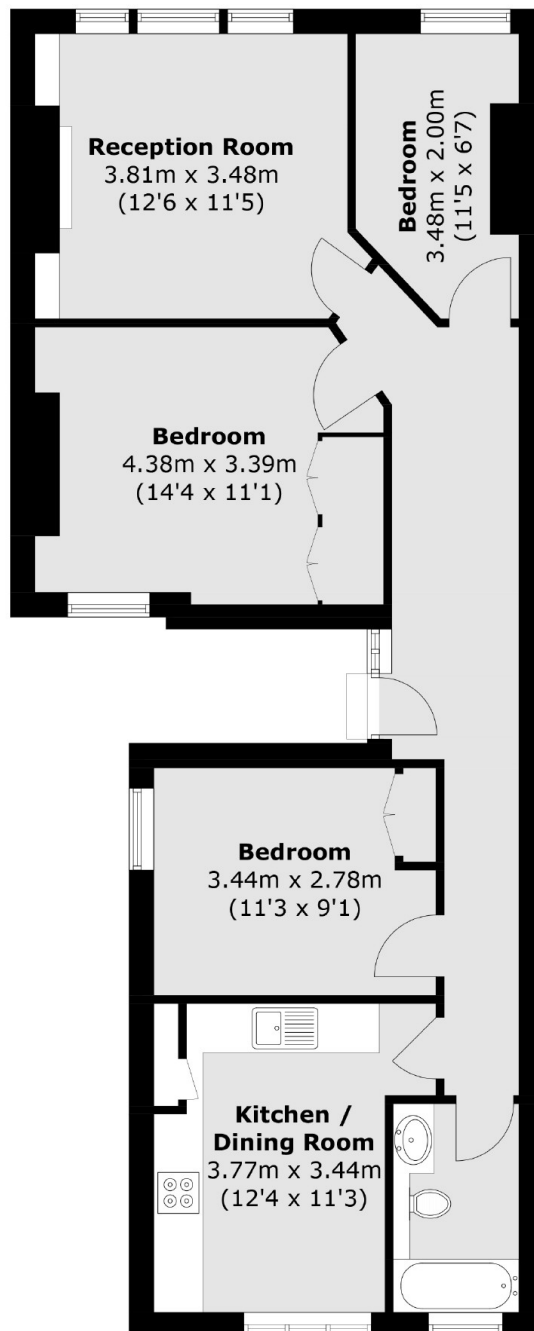
A top floor lateral three bedroom flat located in an attractive end of terrace red brick mansion block. The flat boasts original period features, high ceilings with a spacious reception room and a separate kitchen. The flat offers the potential to extend into the loft and build a roof terrace (STPP).

Set enviably between the amenities and transport links of both Parsons Green and Putney Bridge, and benefits from being a short walk from Hurlingham Park and the River Thames.

Features

- Share Of Freehold
- Period Features
- Enviably Location
- Three Bedrooms
- Lateral Living
- Potential to Extend (STPP)

New Kings Road, London, SW6



Total area (approx.): 73.6 sq. m (792.2 sq. ft)

Dexters

Fulham
569 Fulham Road
London
SW6 1ES
Sales
020 7386 5386

Energy Rating: TBC. We aim to make our particulars both accurate and reliable. However they are not guaranteed; nor do they form part of an offer or contract. If you require clarification on any points then please contact us, especially if you're traveling some distance to view. Please note that appliances and heating systems have not been tested and therefore no warranties can be given as to their good working order.



dexters.co.uk