



## Fulham Road, SW6

### £650,000

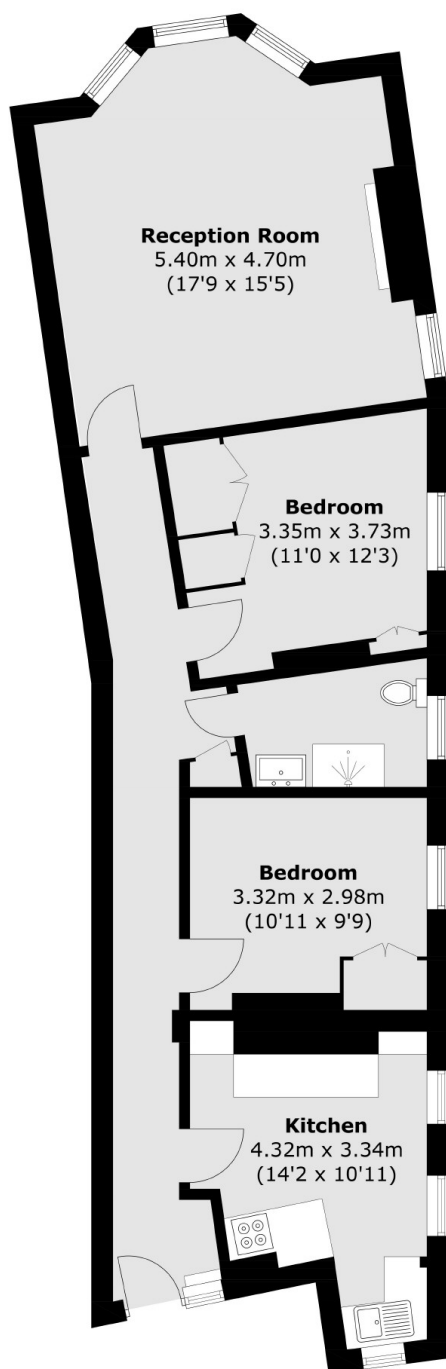
Located on the second floor of this attractive red brick mansion block, is a bright and spacious two double bedroom apartment. This property has a separate kitchen, high ceilings with stunning period features and has been finished to a high standard throughout.

King Edward Mansions is close to Parsons Green as well as Fulham Broadway and has a variety of shops, restaurants, bars and boutiques on the doorstep.

### Features

- Mansion Block
- Two Double Bedrooms
- High Ceilings
- Period Features
- Separate Kitchen
- No Chain

# Fulham Road, London, SW6



Total area (approx.): 79.1 sq. m (851.4 sq. ft)

## Dexters

Fulham  
569 Fulham Road  
London  
SW6 1ES  
Sales  
020 7386 5386

Energy Rating: C. We aim to make our particulars both accurate and reliable. However they are not guaranteed; nor do they form part of an offer or contract. If you require clarification on any points then please contact us, especially if you're traveling some distance to view. Please note that appliances and heating systems have not been tested and therefore no warranties can be given as to their good working order.

 **RICS** | Regulated  
Estate Agent  
and Letting Agent

[dexters.co.uk](https://www.dexters.co.uk)