



## Townmead Road, SW6

£530,000

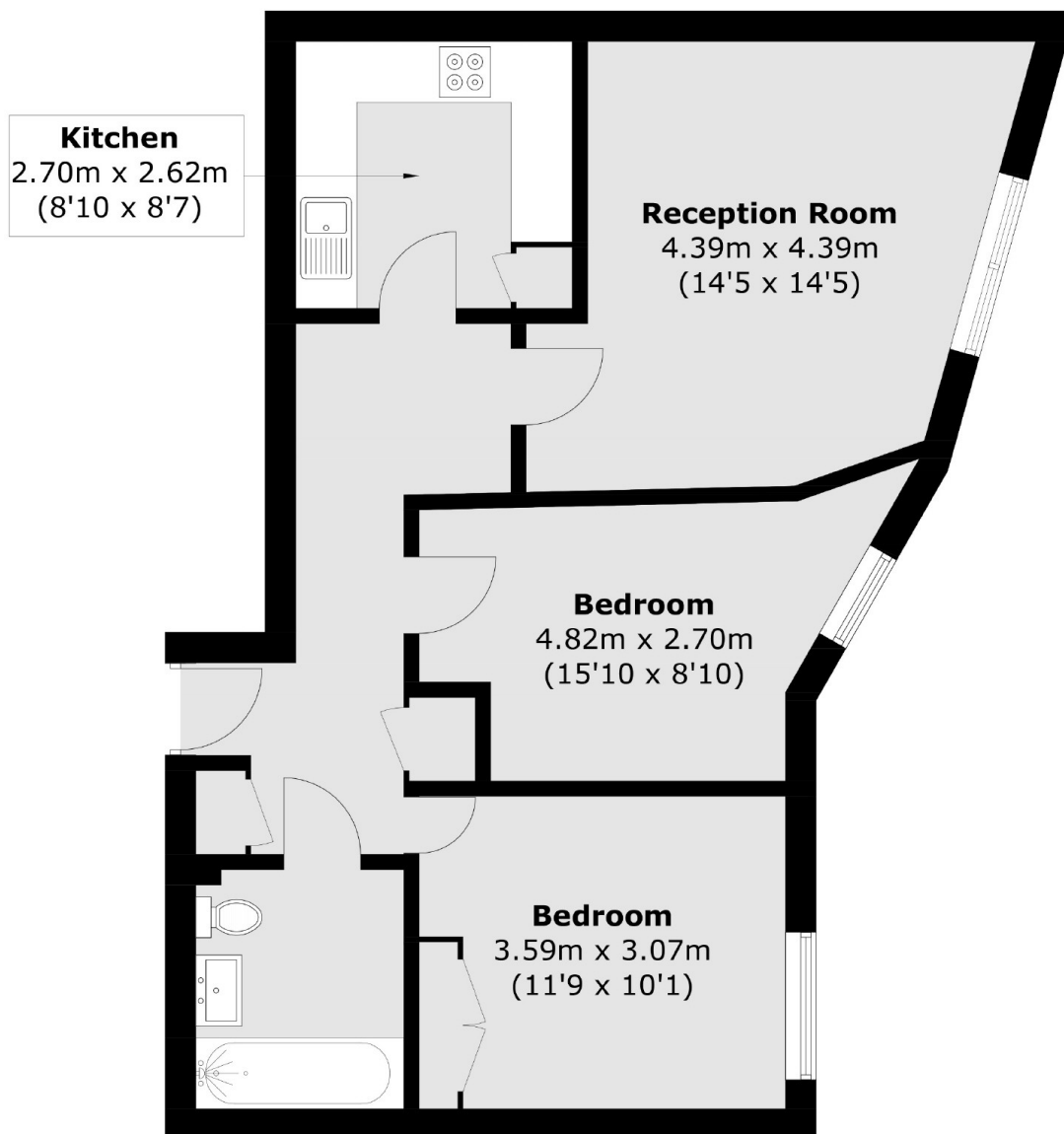
A two double bedroom, one bathroom lateral apartment located moments from imperial wharf. The flat boasts a spacious reception room and a separate kitchen.

The property is opposite the transport links and amenities of Imperial Wharf and is a short distance from Fulham Broadway and the River Thames.

### Features

- Long Lease
- Two Double Bedrooms
- Well Finished
- Imperial Wharf
- Spacious Reception Room
- Purpose Built

# Townmead Road, London, SW6



Total area (approx.): 63.9 sq. m (687.8 sq. ft)