

## Prothero Road, SW6

£1,050,000

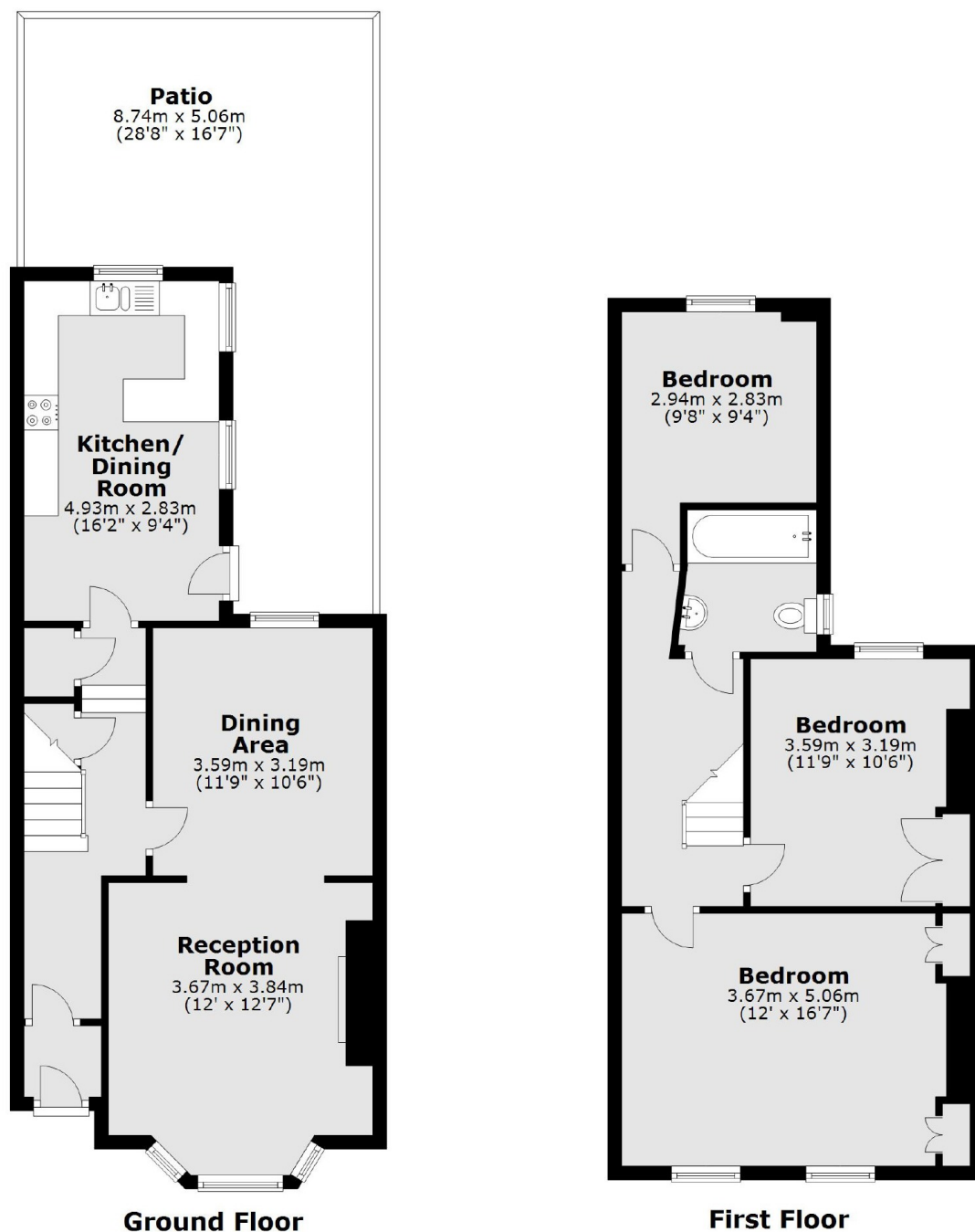
A three double bedroom house located on a quiet residential street close to Fulham Broadway and West Brompton. The house boasts a spacious double reception room, a fully integrated kitchen leading out to a private garden. The house benefits from the potential to extend to the side and into the loft (STPP).

Ideally located within a short distance from all the local amenities and transport links of Fulham Broadway, West Brompton and Earls Court.

### Features

- Three Double Bedrooms
- Double Reception Room
- Freehold House
- Private Garden
- Potential To Extend (STPP)
- Quiet Residential Street

# Prothero Road, London, SW6



Total area: approx. 103.3 sq. metres (1112.4 sq. feet)