

## Tamworth Street, SW6

£950,000

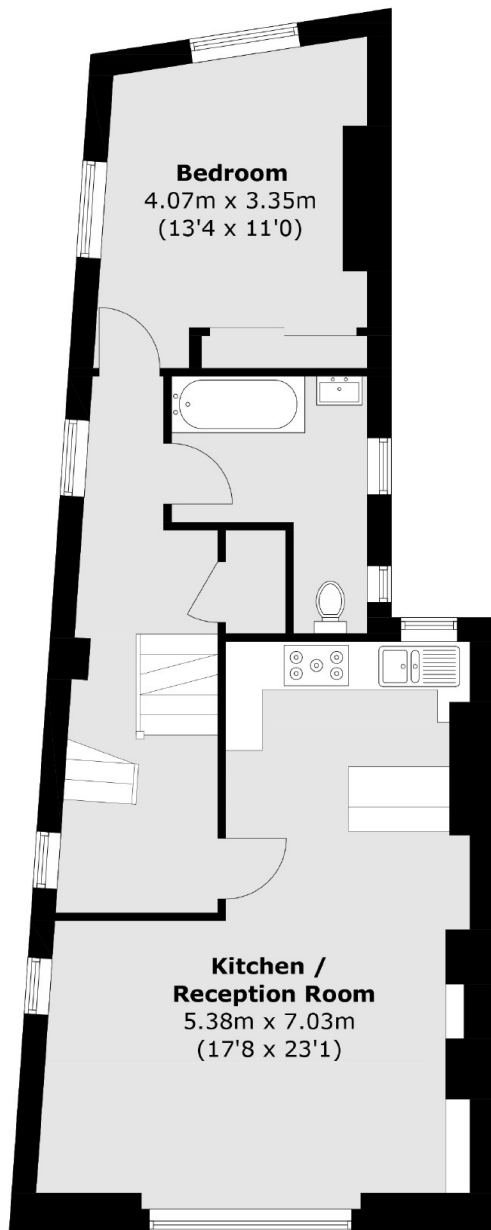
Set over three floors of this imposing Victorian building is this substantial apartment. This property consists of three double bedrooms, two bathrooms, a kitchen/living room with dual aspect windows and it's own entrance.

Tamworth Street is a quiet residential street within close distance to the array of local amenities and transport links of Fulham Broadway and West Brompton. The green space of Eel Brook Common is only a short walk away.

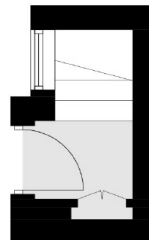
### Features

- Three Double Bedrooms
- Two Bathrooms
- Modern Kitchen
- Own Entrance
- Over 1000 Sq Ft
- Newly Renovated

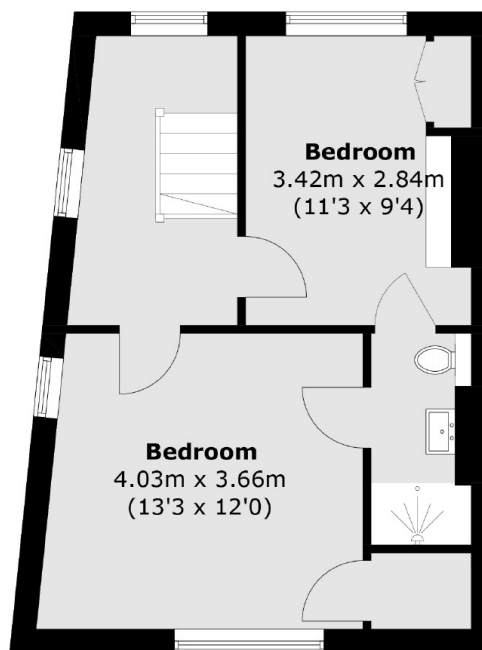
# Tamworth Street, London, SW6



**First Floor**



**Ground Floor**



**Second Floor**

Total area (approx.): 100.1 sq. m ( 1077.5 sq. ft)