



Wandsworth Bridge Road, SW6

£550,000

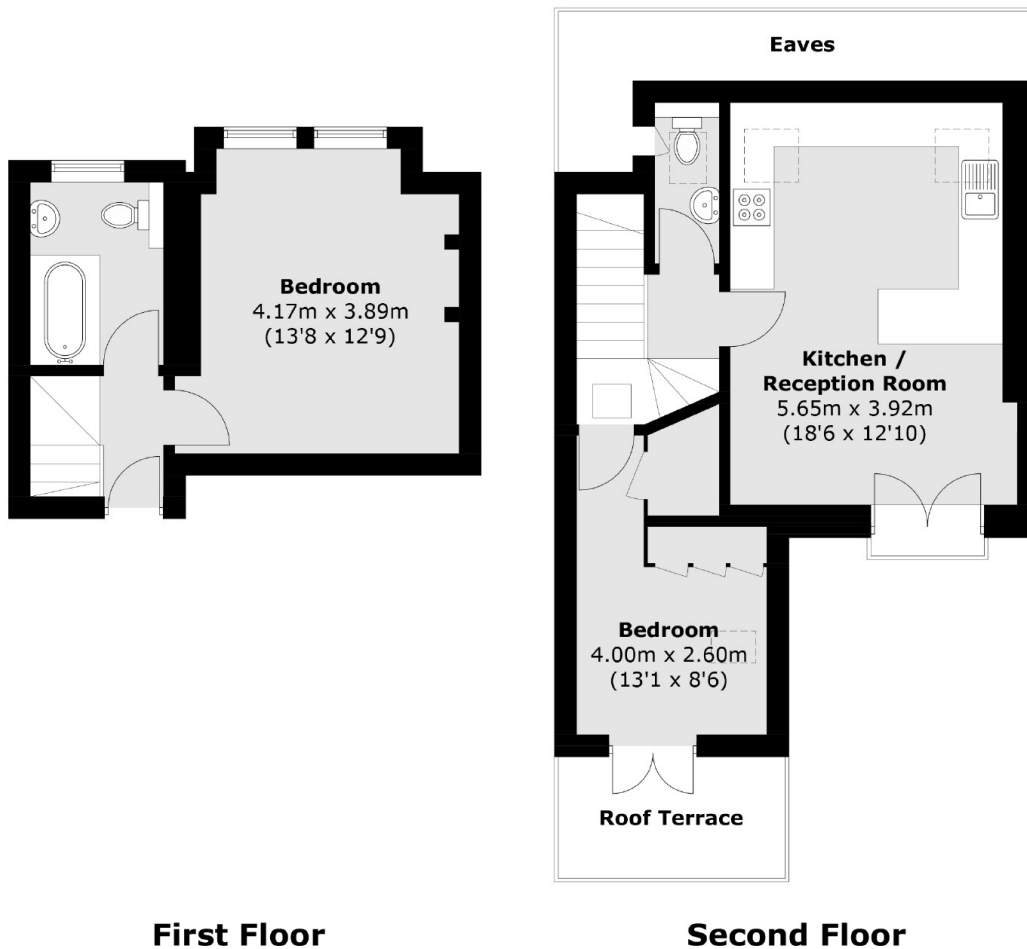
A spacious, two bedroom split level flat located in a Victorian conversion building. The property has been meticulously renovated throughout with an open plan kitchen living room, well appointed family bathroom, an additional W.C and a private roof terrace.

Located on the popular Wandsworth Bridge Road with access to a selection of shops, bars, restaurants and numerous transport links including Fulham Broadway, Wandsworth Town and Imperial Wharf.

Features

- Immaculately Finished
- Two Bedrooms
- Private Roof Terrace
- Split Level Period Conversion
- Open Plan Kitchen/Living
- No Chain

Wandsworth Bridge Road, London, SW6



First Floor

Second Floor

Total area (approx.): 64.4 sq. m (693.2 sq. ft)
Roof Terrace (approx.): 5.1 sq. m (54.9 sq. ft)
(Excluding Eaves)