



Townmead Road, SW6

£425,000

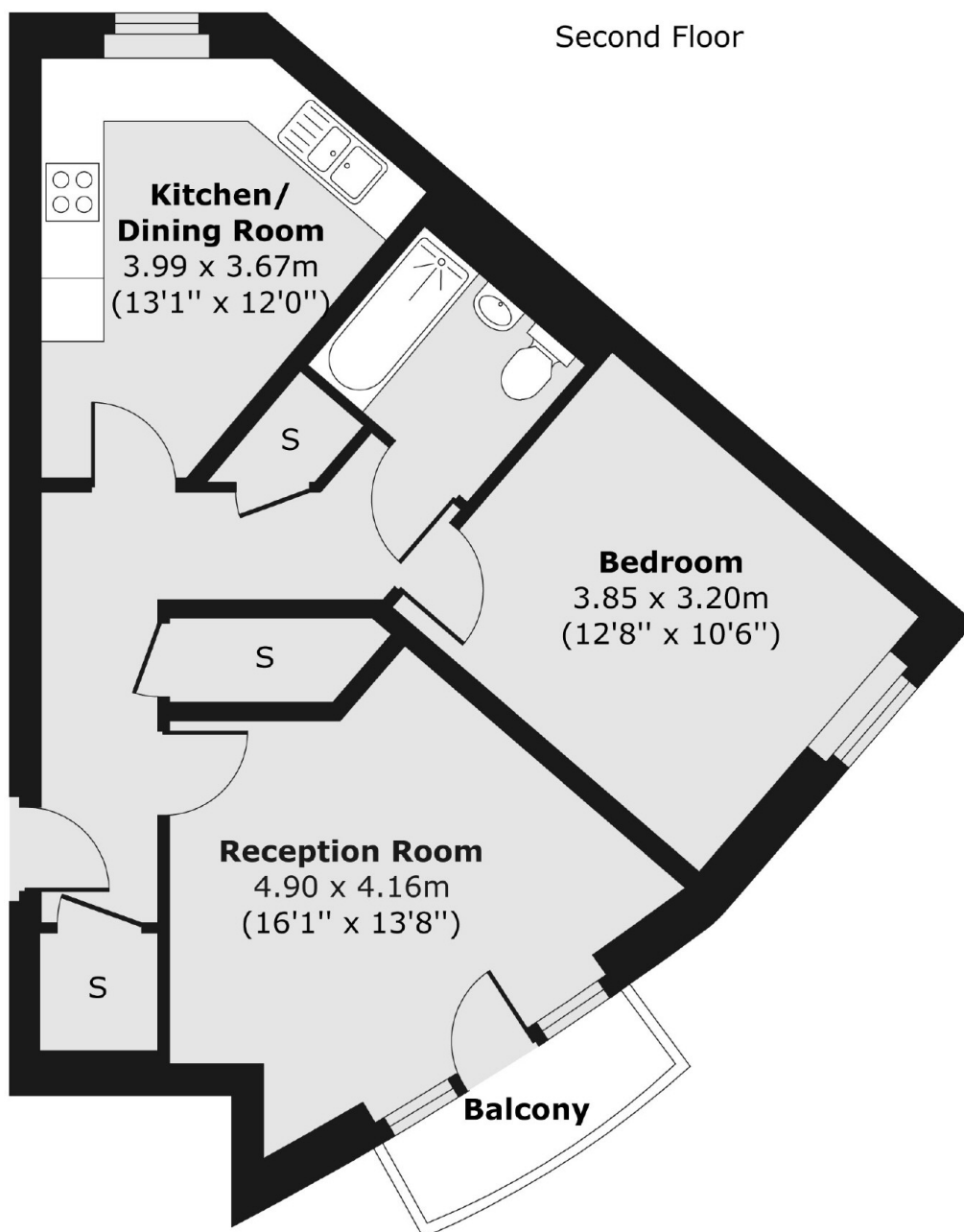
A spacious double bedroom apartment enviably situated on the banks of the river Thames. The property has a separate kitchen, with a large reception room which benefits from a balcony. The apartment also has ample storage.

Situated within close proximity to the amenities and transport links of Imperial Wharf, Fulham Broadway and Wandsworth Town.

Features

- Over 600 Sq Ft
- Balcony
- Close to The River Thames
- One Double Bedroom
- Separate Kitchen
- Underground Parking Included

Townmead Road, London, SW6



Total area (approx.): 55.99 sq. m (603 sq. ft)

Balcony area (approx.): 2.58 sq. m (28 sq. ft)