



## Wandsworth Bridge Road, SW6

### £700,000

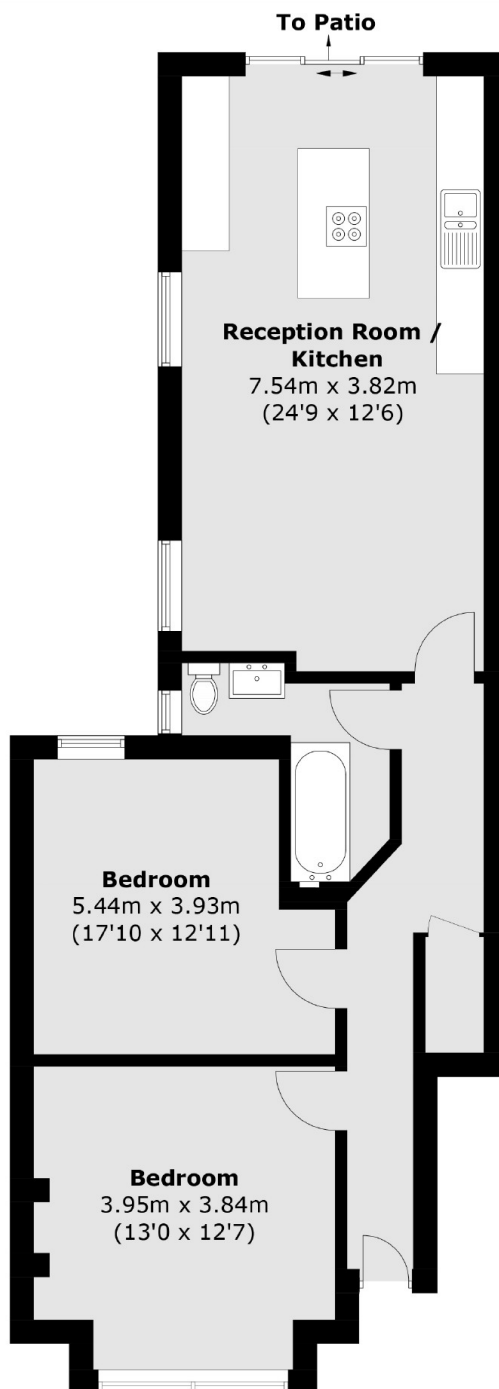
An best in class recently refurbished own front door two double bedroom garden flat located in a Victorian conversion building. The property boasts a large open plan kitchen/living area with direct access out onto a private garden.

Located on the popular Wandsworth Bridge Road with access to a selection of shops, bars, restaurants and numerous transport links including Fulham Broadway, Wandsworth Town and Imperial Wharf.

### Features

- Immaculately Finished
- Two Double Bedrooms
- Open Plan Kitchen/Living
- No Chain
- Large Private Garden
- Modern Bathroom

# Wandsworth Bridge Road, London, SW6



Total area (approx.): 71.8 sq. m (772.8 sq. ft)