



Harwood Road, SW6

£1,150,000

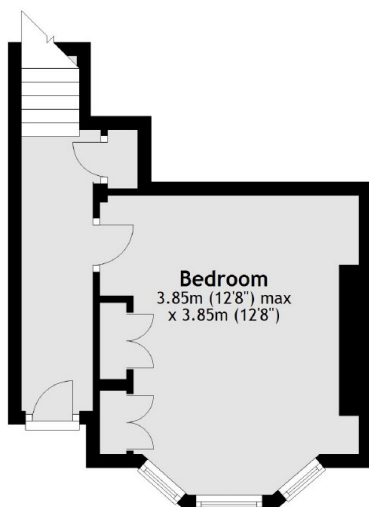
A larger than usual own front door three double bedroom split level maisonette, located enviably within the heart of Fulham. The property boasts a large reception room with high ceiling heights, a separate fully integrated kitchen and a large private roof terrace.

Located moments away from the amenities and transport links of Fulham Broadway. The property backs onto Eel Brook Common and is well connected with Parsons Green.

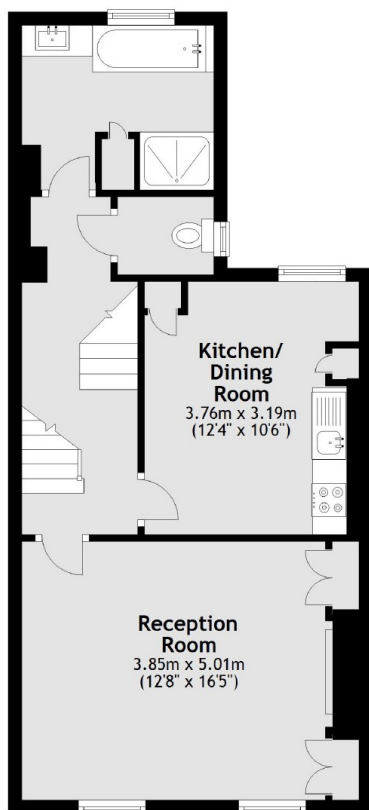
Features

- Three Double Bedrooms
- Large Reception Room
- Private Roof Terrace
- Own Front Door
- Split Level Period Conversion
- Immaculately Renovated

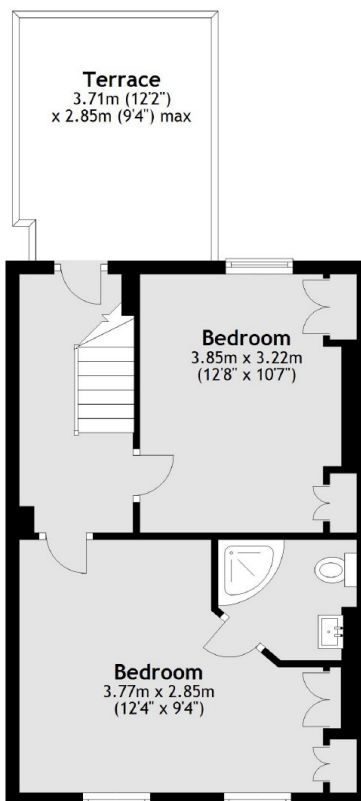
Harwood Road, London, SW6



Ground Floor



First Floor



Second Floor