

Hazlebury Road, SW6

£700,000

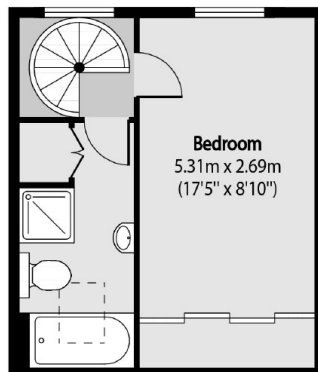
A sizeable and attractive period maisonette. With the accommodation spanning over three floors the property comprises two large double bedrooms, large family bathroom, raised kitchen and reception room with access to a private balcony.

Located in the highly sought after "Bury Triangle" conveniently located for the amenities on Wandsworth Bridge Road and the transport links of Fulham Broadway.

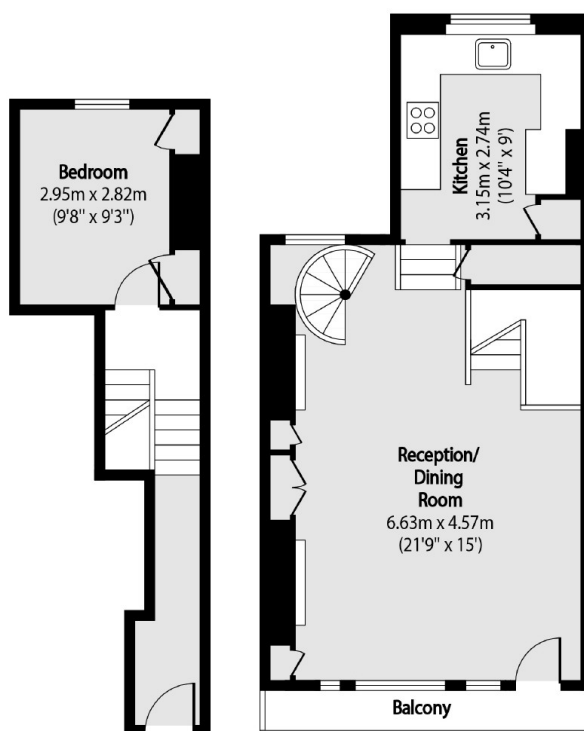
Features

- Sought After Location
- Two Double Bedrooms
- Period Conversion
- Balcony
- Four Piece Bathroom
- Sizeable Reception Room

Hazlebury Road, London, SW6



Second Floor



Ground Floor

First Floor

Total area (approx): 78.96 sq m (850 sq. ft)

Balcony total area (approx): 2.97 sq m (32 sq. ft)