



Wandsworth Bridge Road, SW6

£450,000

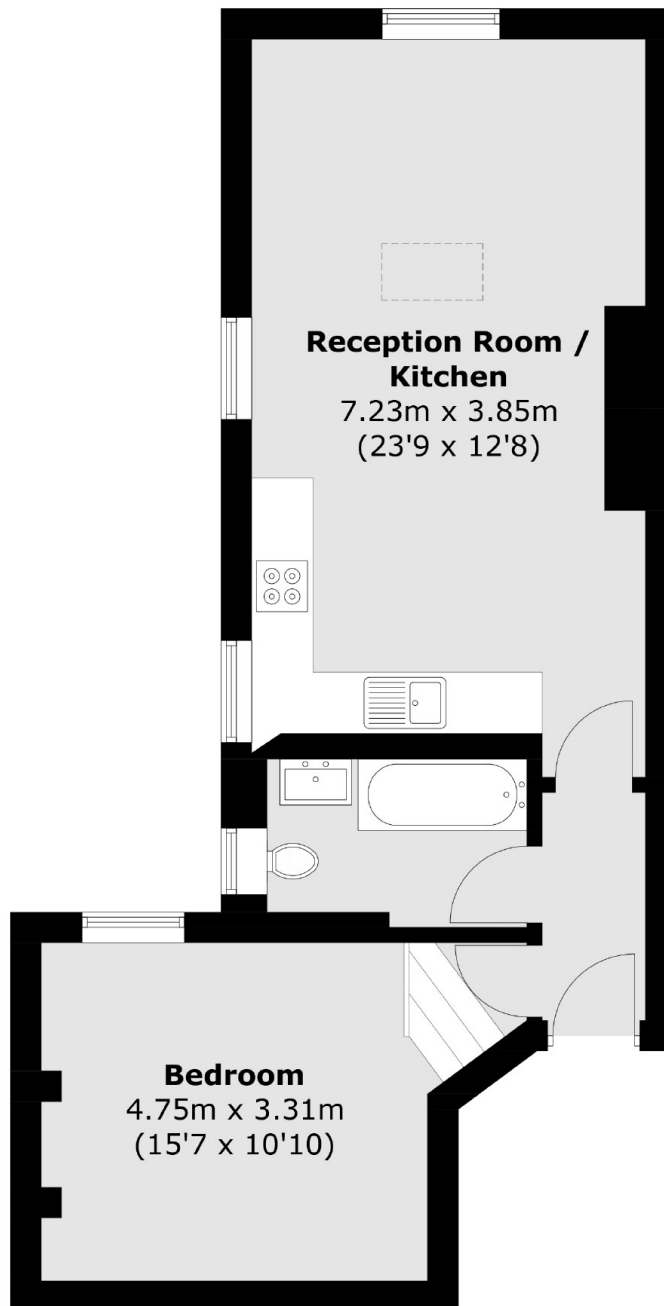
A best in class one double bedroom flat located in a Victorian conversion building. The property has been meticulously renovated throughout offering an abundance of living space with its large open plan kitchen/living room.

Located on the popular Wandsworth Bridge Road with access to a selection of shops, bars, restaurants and numerous transport links including Fulham Broadway, Wandsworth Town and Imperial Wharf.

Features

- Immaculately Finished
- One Double Bedroom
- No Chain
- Modern Bathroom
- Long Lease
- Open Plan Kitchen/Living

Wandsworth Bridge Road, London, SW6



Total area (approx.): 48.4 sq. m (520.9 sq. ft)