



Fulham Road, SW6

£700,000

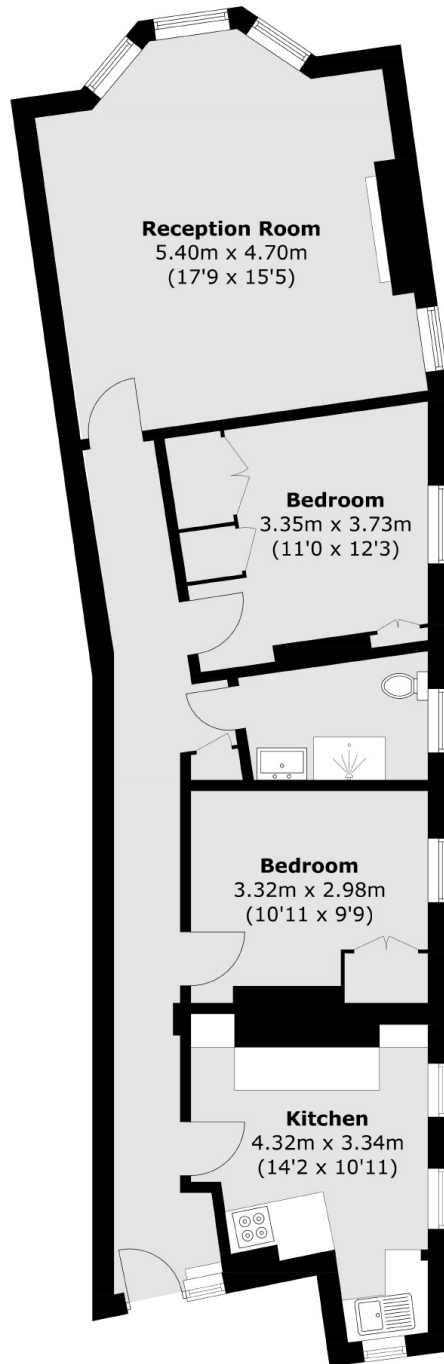
Located on the second floor of this attractive red brick mansion block, is a bright and spacious two double bedroom apartment. This property has a separate kitchen, high ceilings with stunning period features and has been finished to a high standard.

King Edward Mansions is close to Parsons Green as well as Fulham Broadway and has a variety of shops, restaurants, bars and boutiques on the doorstep.

Features

- Mansion Block
- Two Double Bedrooms
- High Ceilings
- Period Features
- Separate Kitchen
- No Chain

Fulham Road, London, SW6



Total area (approx.): 79.1 sq. m (851.4 sq. ft)