



Bovingdon Road, SW6

£2,500,000

Dexters



Bovingdon Road, SW6

A four double bedroom family house on the Peterborough Estate. Part of Fulham's famous collection of 'Lion houses', they are regarded as Fulham's most sought after properties.

The ground floor of this impressive Lion house has a spacious double reception room, ideal for both informal and formal living. The property has an abundance of original features throughout. A fully integrated, kitchen breakfast room to the rear is well appointed and has french doors which lead out onto the private garden which is larger than others on the road.

The lower ground floor has been configured into a study and a utility room but can be utilised in the most suitable way for the next owner.

The principal suite is located on the top floor, with an impressively sized bedroom and recently refurbished en-suite bathroom. There is also another well sized double bedroom on this floor with another en-suite bathroom.

The top floor has two further double bedrooms which are serviced by a jack and gill bathroom. There is the potential to do a rear extension adding a further bedroom on this floor.

Features

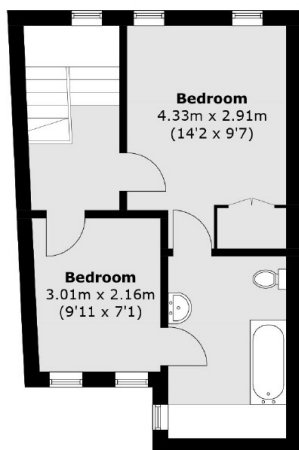
- Lion House
- Peterborough Estate
- Four Double Bedrooms
- Double Reception Room
- Three Bathrooms
- Additional Study



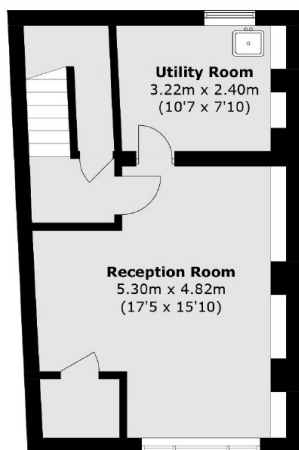




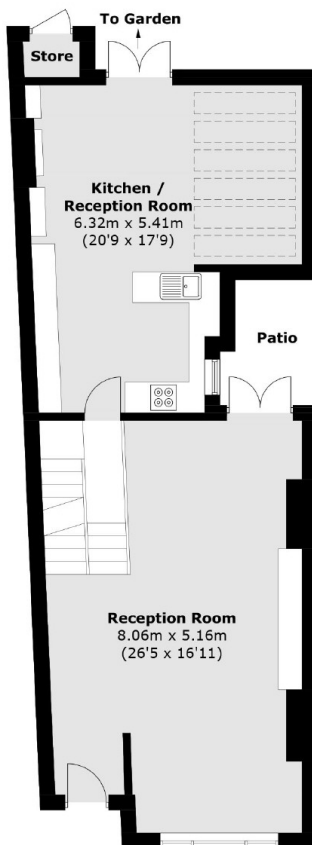
Bovingdon Road, London, SW6



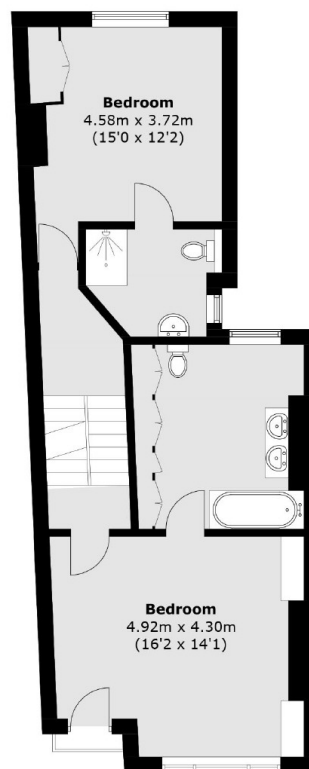
Second Floor



Lower Ground Floor



Ground Floor



First Floor

Total area (approx.): 205.5 sq. m (2,212 sq. ft)
(Excluding Store)
Store (approx.): 0.9 sq. m (9.7 sq. ft)