



## Brompton Park Crescent, SW6

£369 Per week

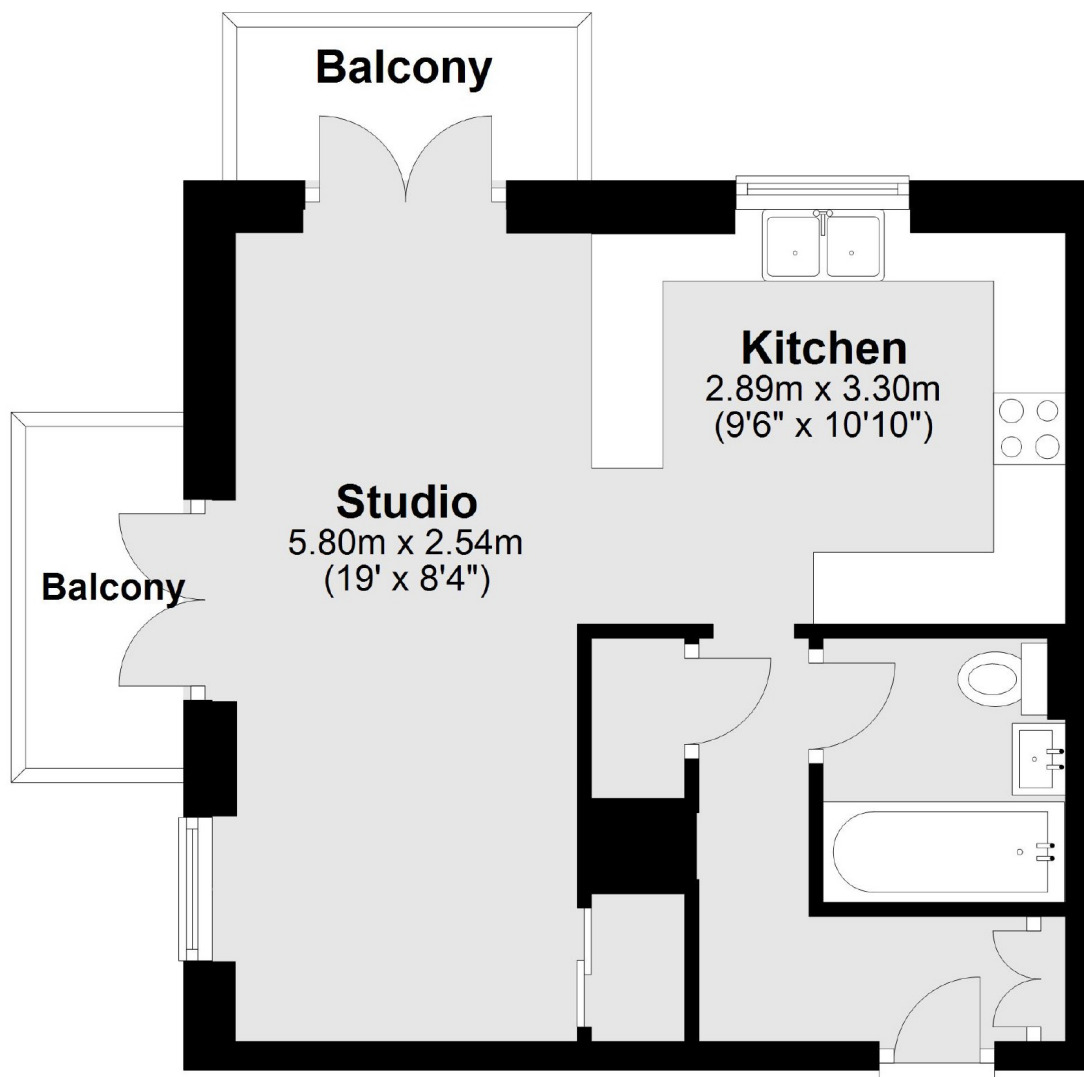
A beautifully refurbished studio apartment in the sought after Brompton Park Crescent development. The property comes with two balconies, off-street parking, communal gardens, swimming pool and gymnasium.

Located moments from the amenities and transport links of both West Brompton and Fulham Broadway.

### Features

- Wooden Flooring
- Two Balconies
- Off-Street Parking
- Gated Complex
- Swimming Pool
- Residents Gym

# Brompton Park Crescent, London, SW6



**Main area: Approx. 34.5 sq. metres (370.8 sq. feet)**  
Plus balconies, approx. 2.8 sq. metres (29.8 sq. feet)