



Rainsborough Square, SW6

£1,850,000

An exceptional three double bedroom new build house within an exclusive development close to both Fulham Broadway and West Brompton.

The development is perfectly positioned between Fulham Broadway (District Line), West Brompton (District and Overground lines) and Earls Court (Piccadilly and District lines) and benefits from the vast amenities and restaurants of Parsons Green and Fulham Broadway.

Features

- Concierge
- Gated Development
- Underground Parking Space
- Underfloor Heating
- Three Double Bedrooms
- High Standard Finish



Rainsborough Square, SW6

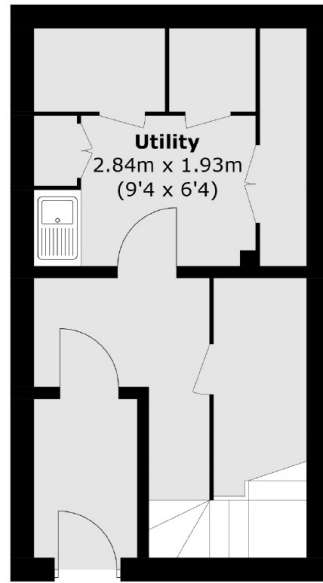
The ground floor of the property comprises of a large open plan kitchen living room with bi fold doors leading out onto a large south facing private garden. The kitchen is fully integrated with Miele appliances throughout. This floor further benefits from underfloor heating, air conditioning and an additional W.C

The first floor consists of two evenly appointed bedrooms with built in storage and the benefit of air conditioning in the bedrooms. There is also a family bathroom on this level. The master en suite is located on the top floor with excellent wardrobe space and air conditioning.

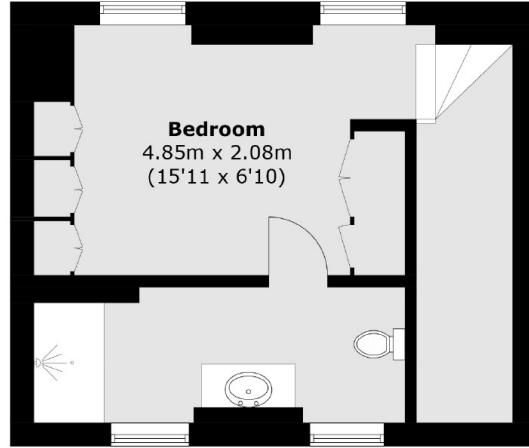
The house further benefits from a lower ground floor level with a large utility room along with direct access out into the private gated underground car park, to which you have two designated spaces.



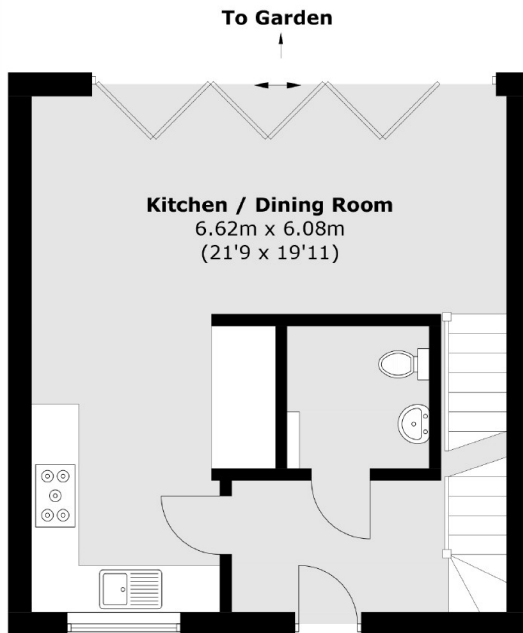
Rainsborough Square, London, SW6



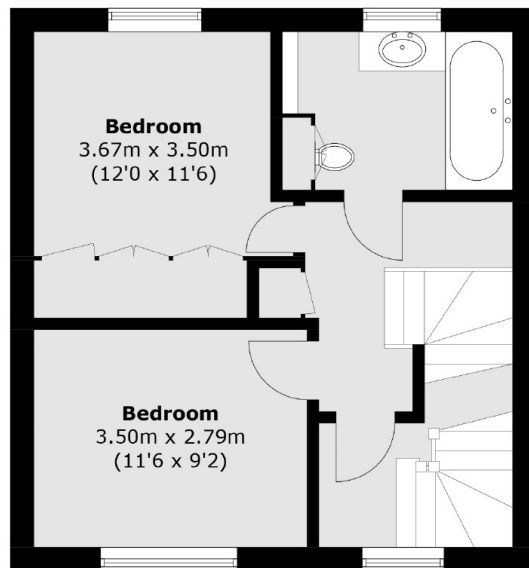
Basement



Second Floor



Ground Floor



First Floor

Total area (approx.): 133.5 sq. m (1,436.9 sq. ft)
(Including Basement)