



Halford Road, SW6

£650,000

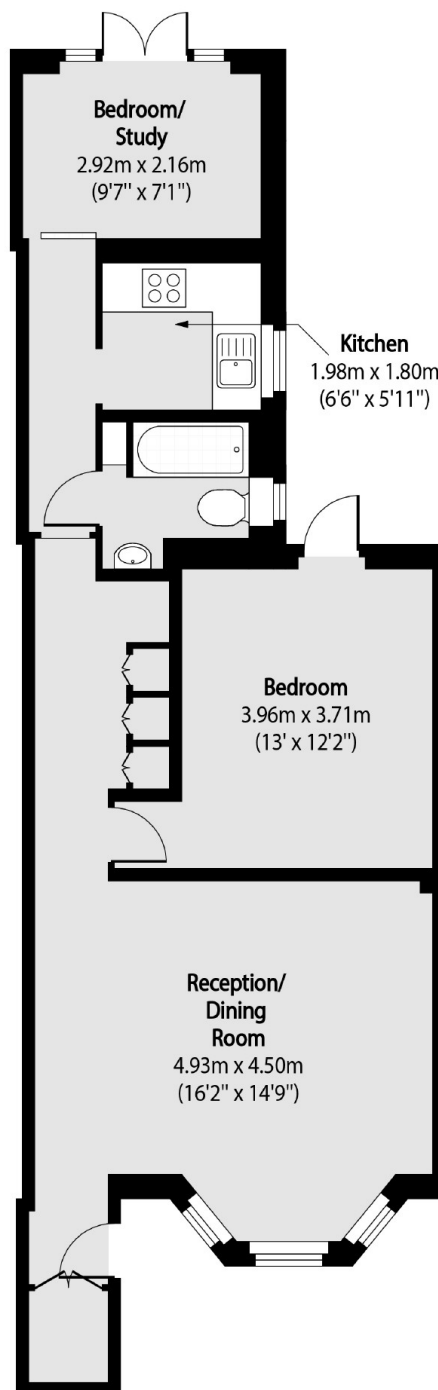
A fully refurbished two bedroom garden flat located on a quiet residential street within the heart of Fulham. The flat has its own front door, boasts a large reception room, an immaculately finished bathroom and a large south west garden.

Halford Road is quiet residential street within close distance of the amenities and transport links of Fulham Broadway and West Brompton. The green space of Eel Brook Common is only a short walk away.

Features

- Share Of Freehold
- Newly Renovated
- Potential To Extend (SSTP)
- Own Front Door
- Garden Flat
- No Chain

Halford Road, London, SW6



Total area (approx): 59.74 sq m (643 sq. ft)