



Halford Road, SW6

£675,000

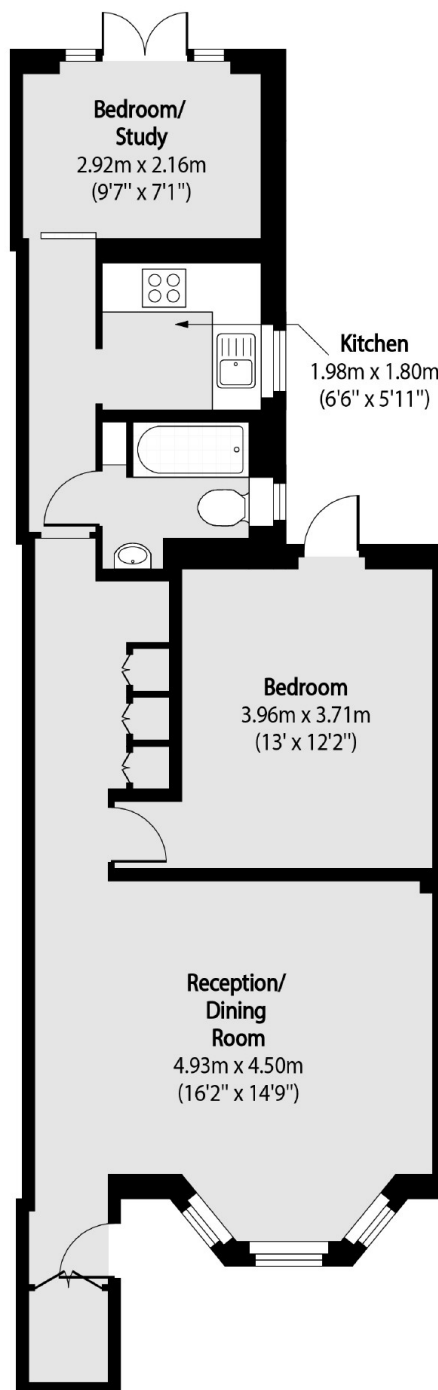
A fully refurbished two bedroom garden flat located on a quiet residential street within the heart of Fulham. The flat has its own front door, boasts a large reception room, an immaculately finished bathroom and a large south west garden.

Halford Road is a quiet residential street within close distance of the amenities and transport links of Fulham Broadway and West Brompton. The green space of Eel Brook Common is only a short walk away.

Features

- Share Of Freehold
- Newly Renovated
- Potential To Extend (SSTP)
- Own Front Door
- Garden Flat
- No Chain

Halford Road, London, SW6



Total area (approx): 59.74 sq m (643 sq. ft)