



## Grimston Road, SW6

£475,000

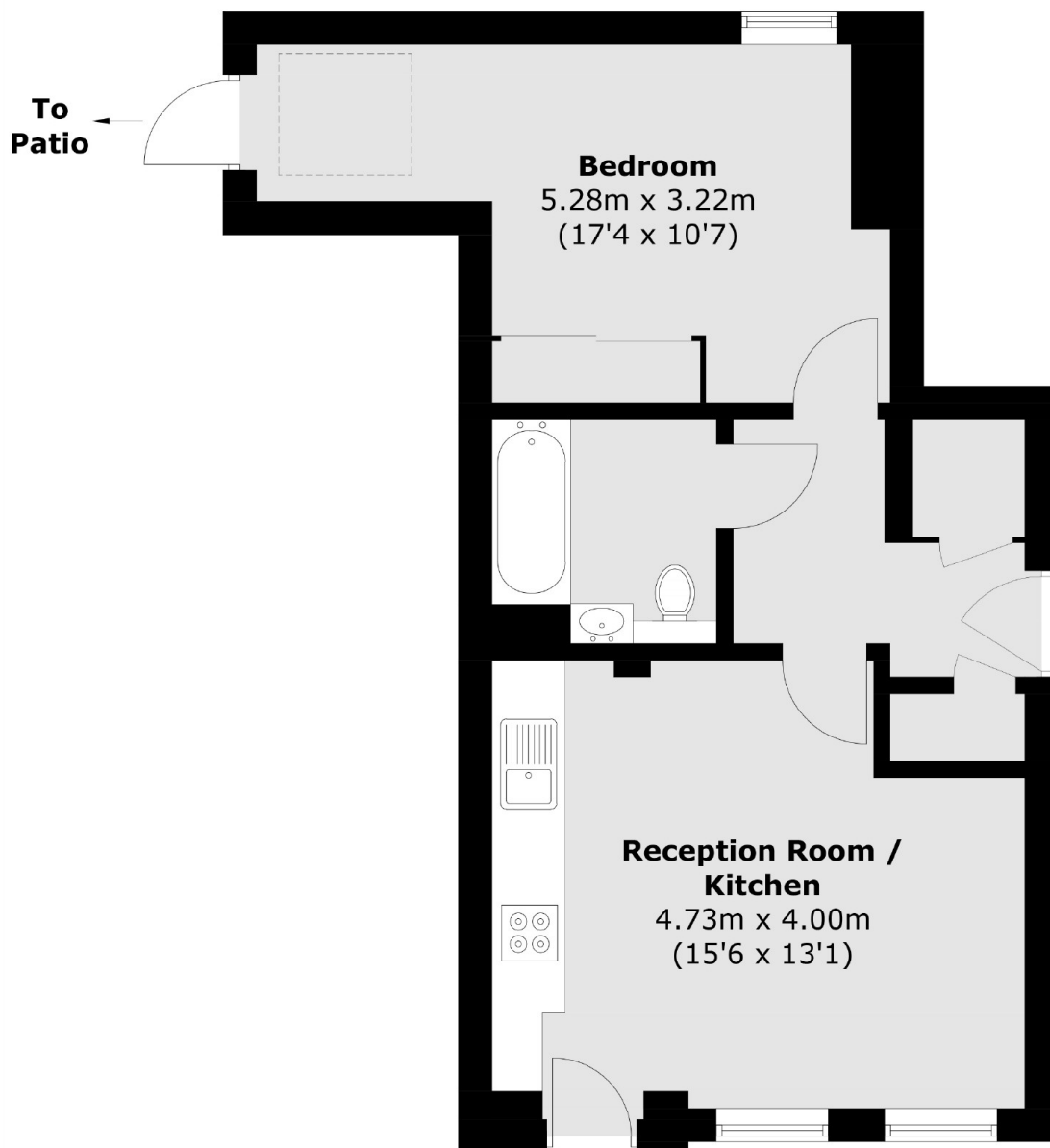
A beautifully finished one double bedroom garden flat with its own front door in Parsons Green. The property is located within Pottery Mews which is an exclusive, privately gated development.

Located equidistant between Parsons Green and Putney Bridge, the property is enviably located between the restaurants, cafe's and transport links.

### Features

- Share Of Freehold
- Own Front Door
- Private Outside Space
- Gated Development
- Under Floor Heating
- High Standard of Finish

# Grimston Road, London, SW6



Total area (approx.): 44.6 sq. m (480.1 sq. ft)

## Dexters

Fulham  
569 Fulham Road  
London  
SW6 1ES  
Sales  
020 7386 5386

Energy Rating: C. We aim to make our particulars both accurate and reliable. However they are not guaranteed; nor do they form part of an offer or contract. If you require clarification on any points then please contact us, especially if you're traveling some distance to view. Please note that appliances and heating systems have not been tested and therefore no warranties can be given as to their good working order.

 **RICS** | Regulated  
Estate Agent  
and Letting Agent

[dexters.co.uk](http://dexters.co.uk)