



William Morris Way, SW6

£1,000,000

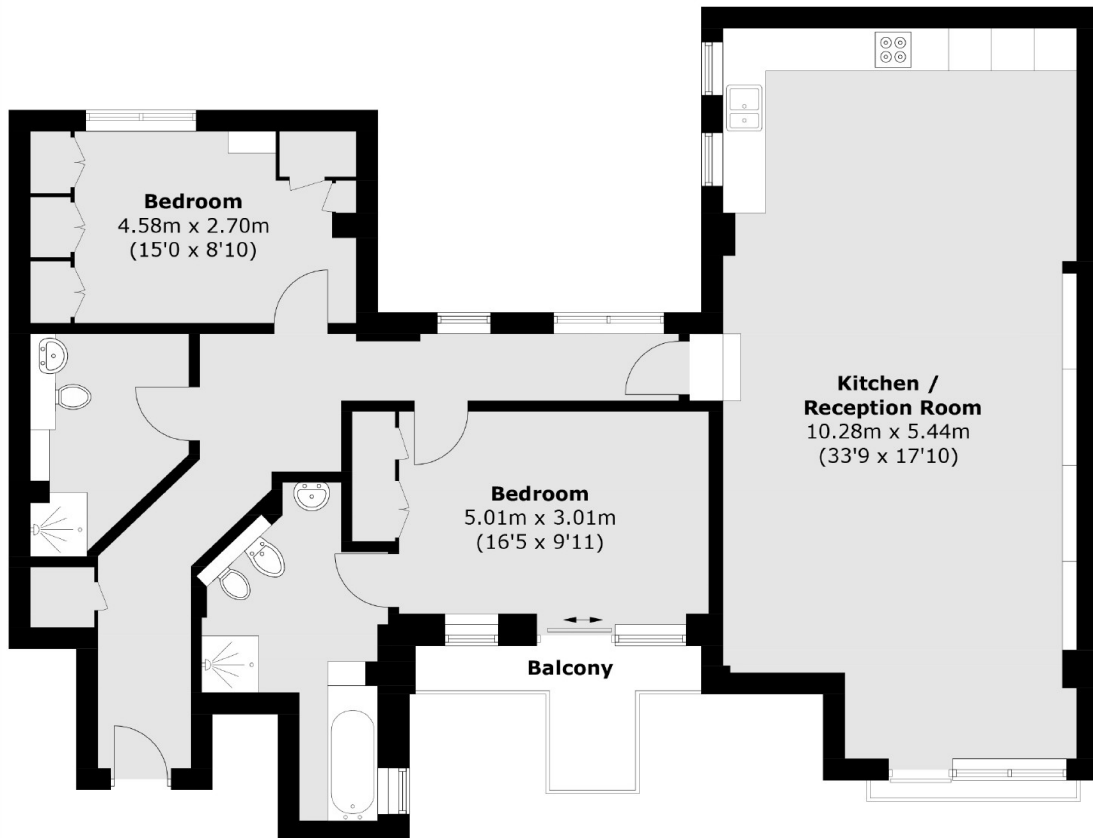
A modern lateral two double bedroom apartment on the 7th floor set on the banks of the River Thames with envious river views. The property benefits from a 24/7 concierge, heating and water including in the annual service charge along with a designated underground private parking space.

Regents on the River is a superb gated riverside development with landscaped gardens, a 24/7 porter while benefitng from the amenities and transport links of Imperial Wharf, Fulham Broadway and Wandsworth Town.

Features

- Direct River Views
- Concierge
- Underground Parking Space
- Private Balcony
- Open Plan Kitchen/Living
- Share Of Freehold

William Morris Way, London, SW6



Total area (approx.): 109.5 sq. m (1178.6 sq. ft)
Balcony area: 4.2 sq. m (45.2 sq. ft)