



Fulham Road, SW6

£650,000

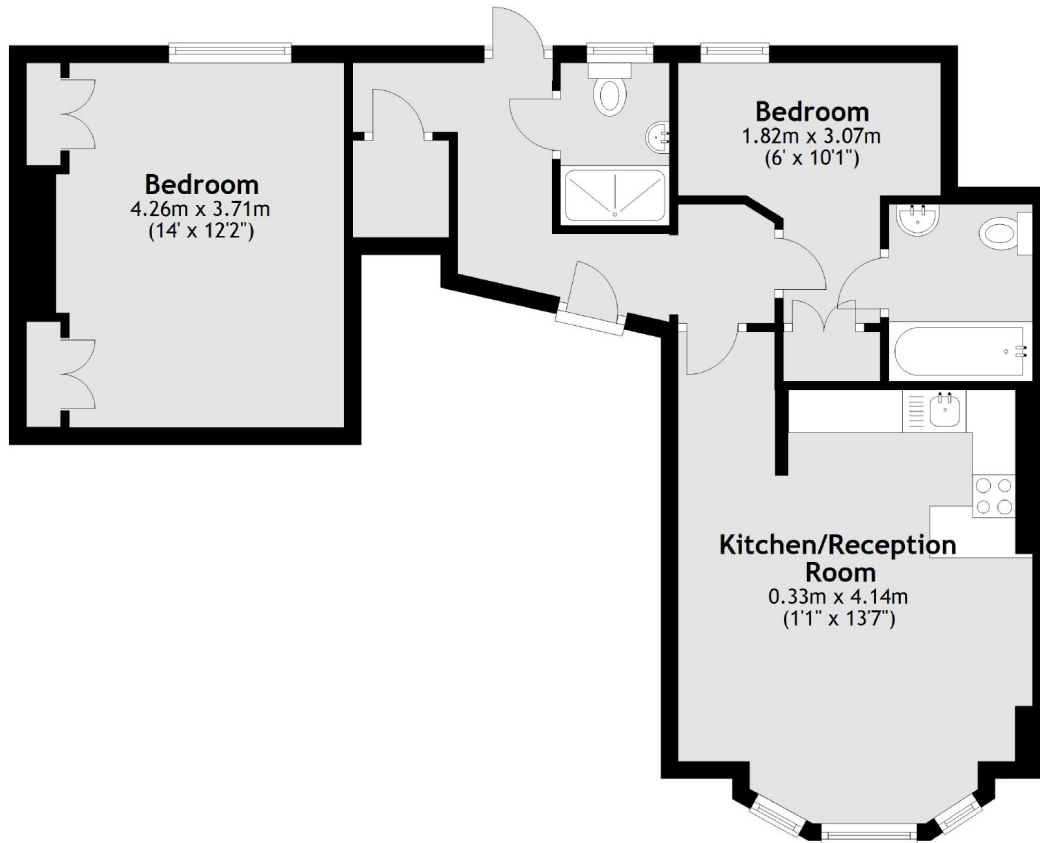
An immaculately presented raised ground floor apartment within this attractive Victorian building. The two double bedrooms are accompanied by two bathrooms, an open plan kitchen living room and a private garden.

Moments from the tube at Fulham Broadway, the property is enviably located within close proximity to Parsons Green and borders Chelsea. The boutique shops, restaurants and bars along the Kings Road are only a short walk away.

Features

- Share Of Freehold
- Two Double Bedrooms
- Private South Facing Garden
- Well-Finished
- Two Bathrooms
- Fulham Broadway

Fulham Road, London, SW6



Total area: approx. 59.3 sq. metres (638.7 sq. feet)