



Fulham Road, SW6

£400,000

A two double bedroom top floor apartment in Fulham Court. The property has a large reception room with a separate kitchen, there are two further double bedrooms on the top floor.

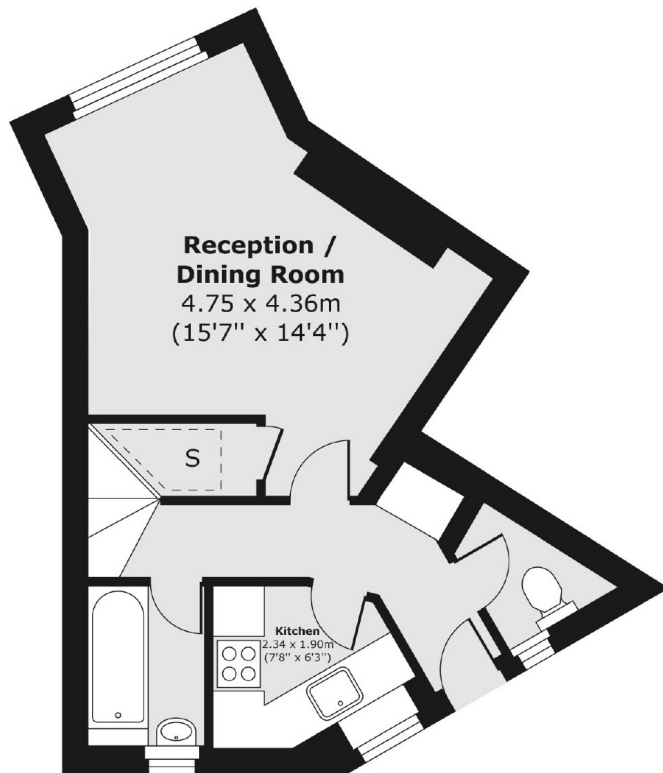
Located within close proximity to the amenities and transport links of Fulham Broadway and Parsons Green.

Features

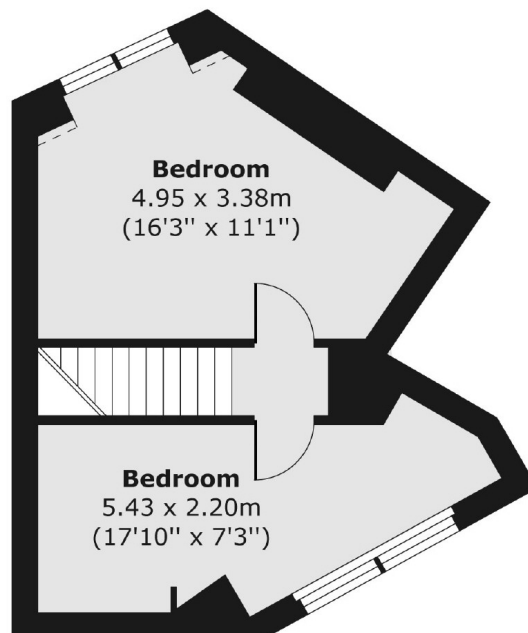
- Two Double Bedrooms
- Split Level
- Separate Kitchen
- Parsons Green
- Good Location
- Top Floor Apartment

Fulham Road, London, SW6

Third Floor



Fourth Floor



Total area (approx.) 557.84 sq. m (623 sq. ft)