



Rowallan Road, SW6

£600,000

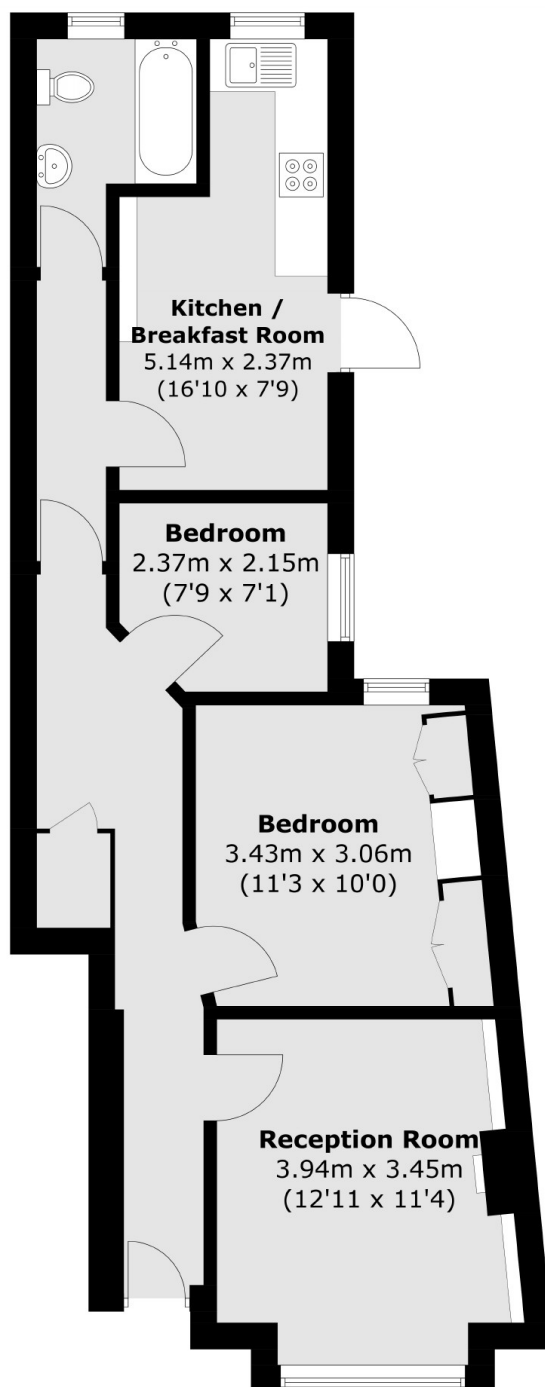
A two double bedroom ground floor garden flat on a quiet residential street between Munster Village and Bishops Park. The property has lots of potential to extend STPP with a private garden to rear. The flat further benefits from a Share of the Freehold.

The property is within close proximity to the amenities and transport links of Munster Village. The house has good transport links near Fulham Broadway, West Brompton and Parsons Green.

Features

- Two Double Bedrooms
- Potential to Extend
- Share Of Freehold
- Private Garden
- Munster Village
- No Chain

Rowallan Road, London, SW6



Total area (approx.): 58.3 sq. m (627.5 sq. ft)