



Clancarty Road, SW6

£2,350,000

An outstanding family home in one of Fulham's most sought after locations moments from South Park.

Clancarty Road is a quiet residential street located in a popular group of roads nestled right next to South Park. The property is only a short walk to Parsons Green where you can find an array of restaurants, independent cafes, boutique shops as well as Hurlingham Park.

Features

- Four Double Bedrooms
- Large Private Garden
- Open Plan Living
- Freehold
- South Park
- Renovated Throughout

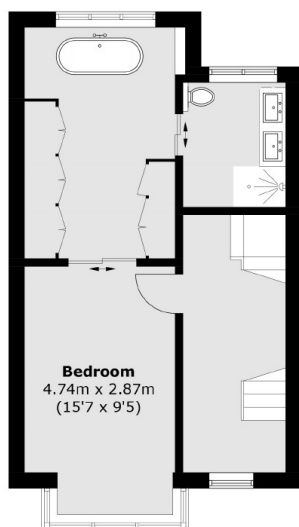


Clancarty Road, SW6

This superb end of terrace four bedroom family home has been completely renovated throughout. The ground floor offers excellent entertaining space, comprising a large open plan reception area and a superb extended bespoke kitchen/ breakfast room, with a large island and integrated appliances that leads out onto a large private garden. In addition, there is a separate guest WC on the ground floor. The basement has been converted to create two double bedrooms, both with en suite shower rooms and built in wardrobes, a media room and a separate utility room. The principal bedroom suite is located across the first floor, with a walk through wardrobe and an elegant en suite. There is a further double bedroom on the top floor with ample built in storage and a modern en suite bathroom.



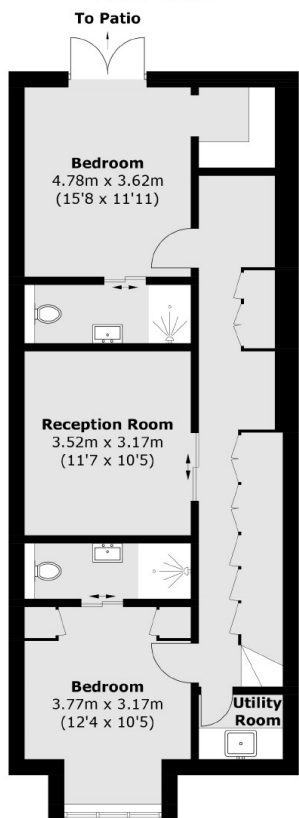
Clancarty Road, London, SW6



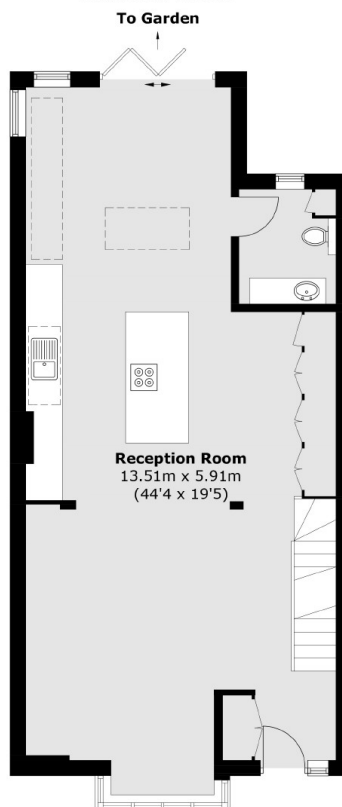
First Floor



Second Floor



Lower Ground Floor



Ground Floor

Total area (approx.): 211.3 sq. m (2,274.5 sq. ft)
(Excluding Eaves)