



Fulham Palace Road, SW6

£800,000

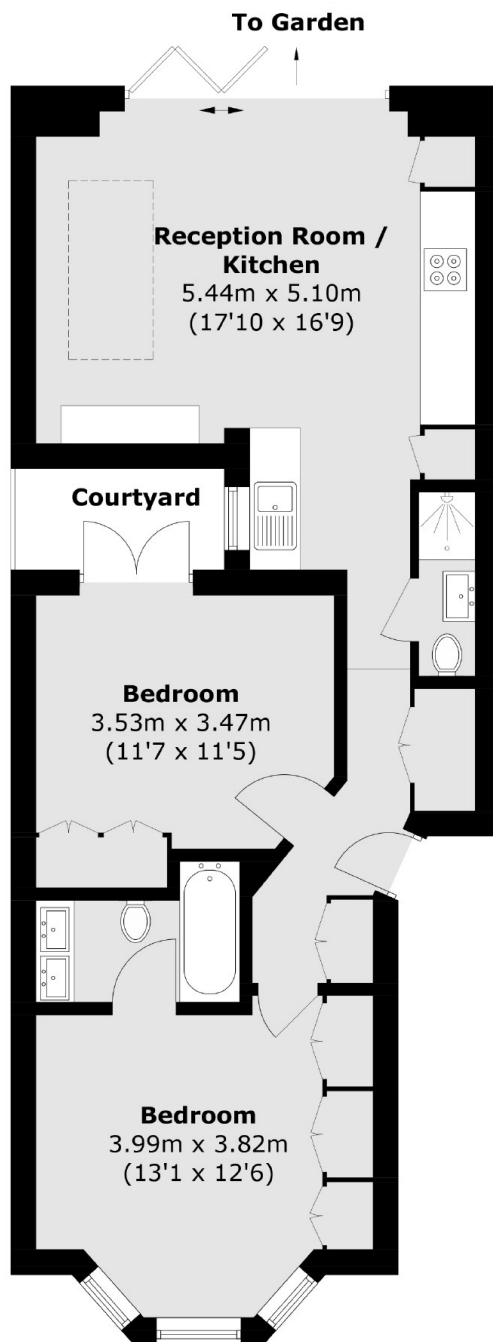
A beautifully presented ground floor two bedroom, two bathroom apartment recently renovated to a high spec, This property offers a bright open plan kitchen, dining and living room onto a private garden.

The property is close to the many shops, bars, restaurants and bus routes on Fulham Road, Fulham Palace Road and New Kings Road. The green space of Bishops Park and the river path along the River Thames are only a short walk away.

Features

- Ground Floor
- Share Of Freehold
- Two Bedrooms
- Two Bathrooms
- No Chain
- Bishops Park

Fulham Palace Road, London, SW6



Raised Ground Floor