



## Columbia Gardens, SW6

£1,350 Per week

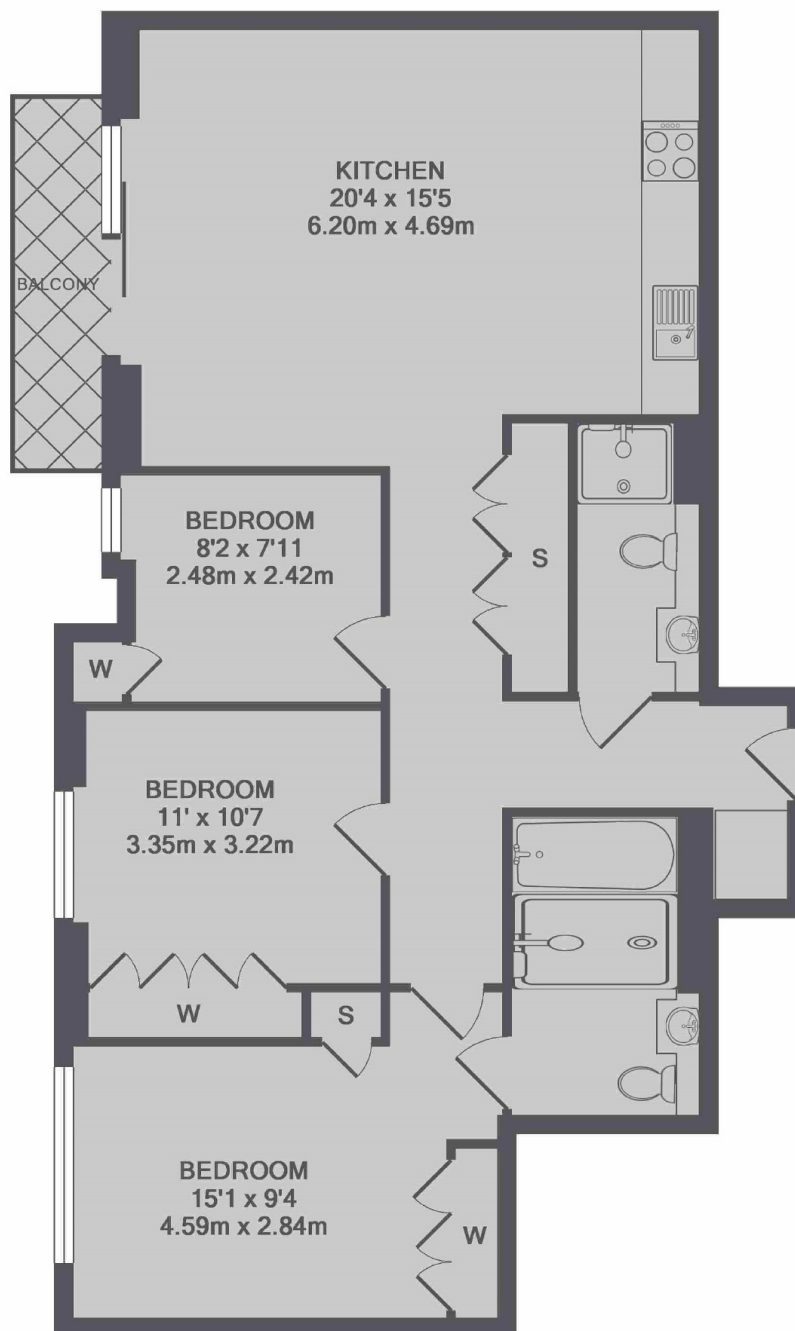
An exclusive fifth floor lateral space apartment. The property has been finished to an exceptional standard throughout and offers a spacious bright open plan reception room, a stylish kitchen with integrated appliances and a private balcony, there are three double bedrooms, ample built-in storage and two luxury bathrooms (master en suite).

Lillie Square is a new and exclusive development, ideally positioned for West Brompton station and many amenities of Earls Court, South Kensington and Chelsea.

### Features

- Three Double Bedrooms
- Two Bathrooms
- Private Balcony
- Residents Pool
- Private Parking
- 24 Hour Concierge

# Columbia Gardens, London, SW6



TOTAL APPROX. FLOOR AREA 914 SQ.FT. (84.9 SQ.M.)

**Dexters**

Fulham  
569 Fulham Road  
London  
SW6 1ES  
Lettings  
020 7386 7386

Energy Rating: B. We aim to make our particulars both accurate and reliable. However they are not guaranteed; nor do they form part of an offer or contract. If you require clarification on any points then please contact us, especially if you're traveling some distance to view. Please note that appliances and heating systems have not been tested and therefore no warranties can be given as to their good working order.

 **RICS** | Regulated  
Estate Agent  
and Letting Agent

[dexters.co.uk](http://dexters.co.uk)