



Mirabel Road, SW6

£800,000

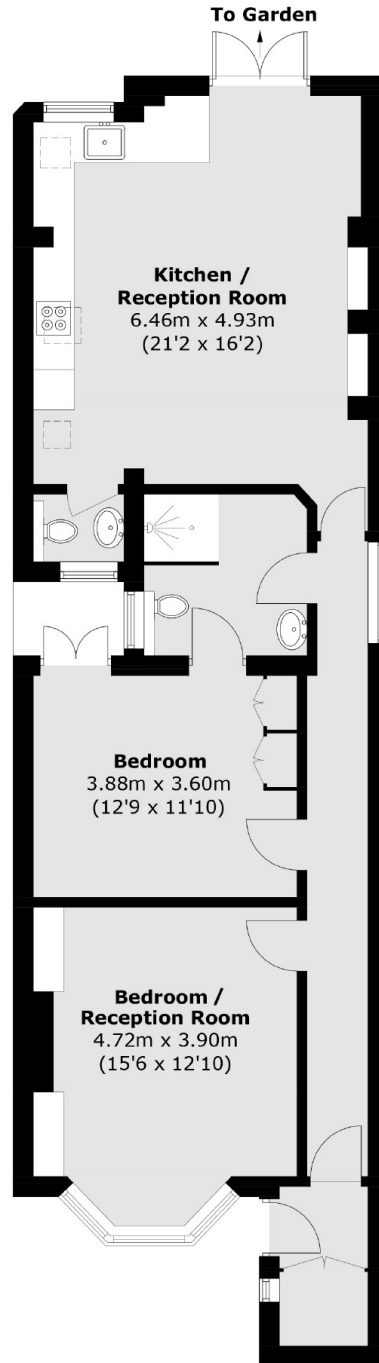
A sizeable two double bedroom garden flat on a quiet residential street between Fulham Broadway and Parsons Green. The property has an open plan kitchen living room, with direct access out onto the south west facing garden and benefits from it's own entrance.

Located almost equidistant between Fulham Broadway and Parsons Green, the property is enviably situated within SW6. The boutique shops, restaurants and bars on both the New Kings Road and Fulham Road are only a short walk away.

Features

- Own Entrance
- South West Facing Garden
- Two Bedrooms
- Share Of Freehold
- Open Plan Kitchen/Living
- Nearly 900 Sq Ft

Mirabel Road, London, SW6



Lower Ground Floor

Total area (approx.): 80.9 sq. m (870.8 sq. ft)

Dexters

Fulham
569 Fulham Road
London
SW6 1ES
Sales
020 7386 5386

Energy Rating: D. We aim to make our particulars both accurate and reliable. However they are not guaranteed; nor do they form part of an offer or contract. If you require clarification on any points then please contact us, especially if you're traveling some distance to view. Please note that appliances and heating systems have not been tested and therefore no warranties can be given as to their good working order.

 **RICS** | Regulated
Estate Agent
and Letting Agent

dexters.co.uk