

Columbia Gardens, SW6

£634 Per week

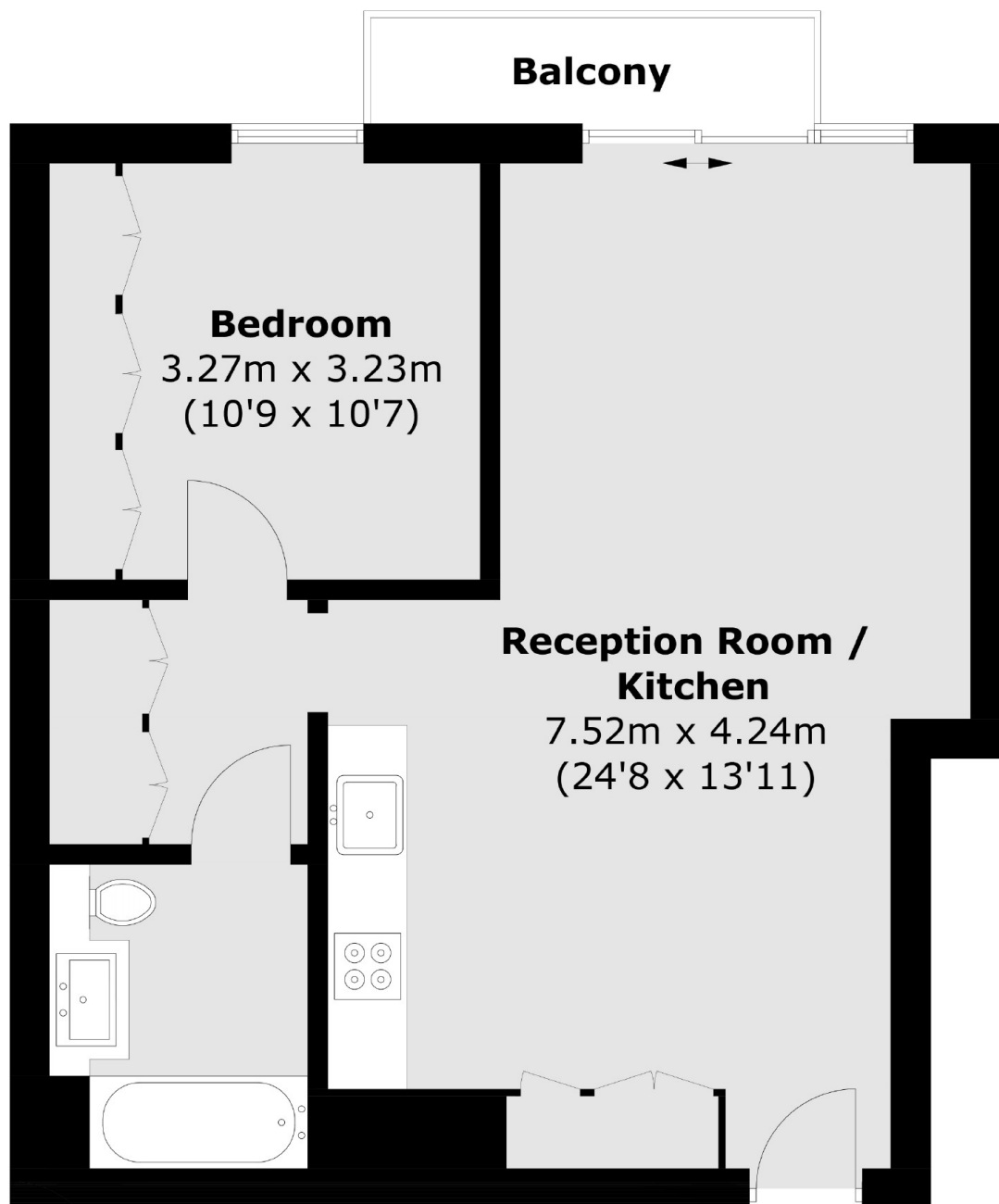
A stunning one bedroom apartment in this popular new build development. Boasting modern fixtures and fittings throughout the property comprises of a large open plan reception room, large bedroom with built in wardrobe space and a marble bathroom.

Lillie Square is ideally located for the amenities on Old Brompton Road and transport links of West Brompton.

Features

- Open Plan Kitchen/ Reception
- 24 Hour Concierge
- Top of the Range Gym & Pool
- Stunning Fixtures & Fittings
- Balcony & Ample Storage
- West Brompton

Columbia Gardens, London, SW6



Total area (approx.): 51.4 sq. m (553.3 sq. ft)
Balcony: 2.8 sq. m (30.1 sq. ft)