



Fulham Park Gardens, SW6

£475,000

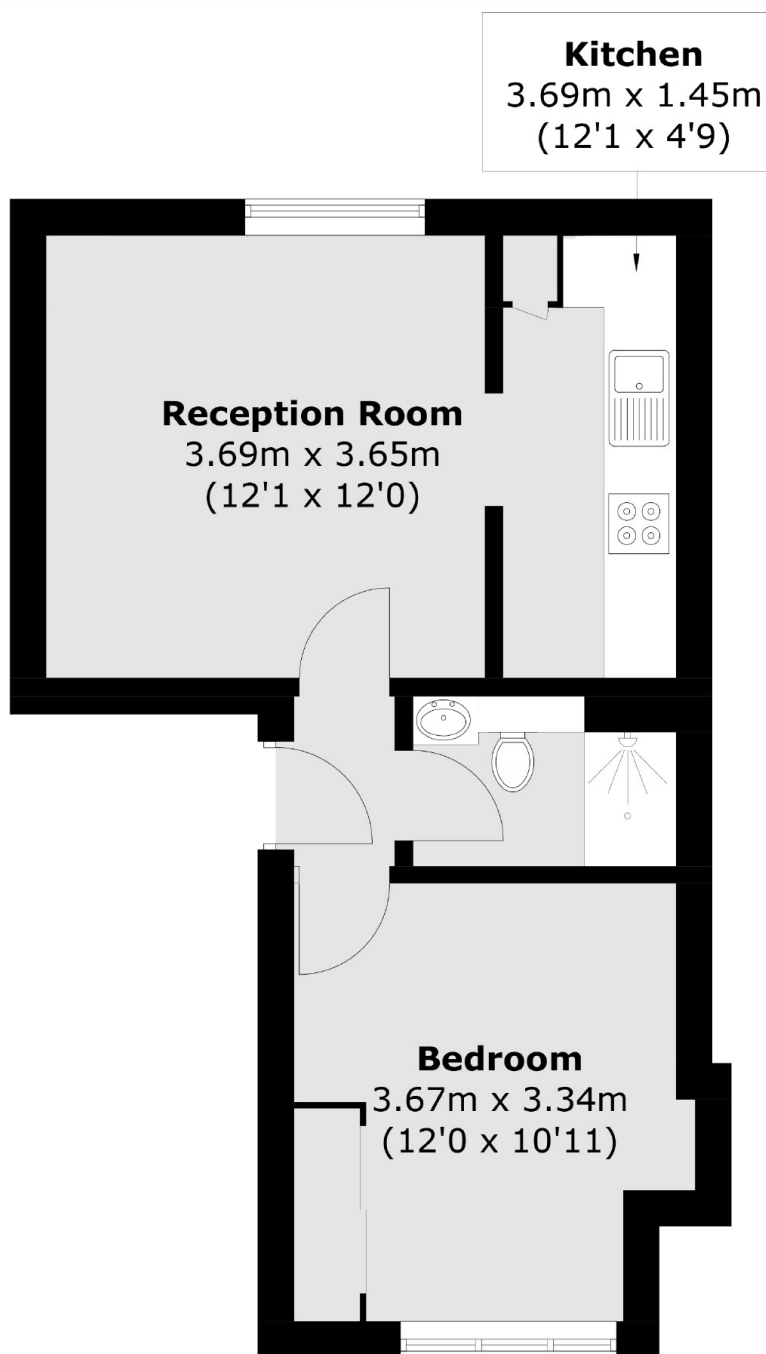
A well proportioned one double bedroom top floor apartment on a quiet residential street in desirable Parsons Green location. The flat benefits from high ceilings with period features and a bright neutral finish throughout.

Fulham Park Gardens is a quiet tree lined street within close proximity to the boutique shops, bars, restaurants and transport links of Parsons Green. Putney Bridge and Fulham Broadway are only a short walk away.

Features

- Period Conversion
- One Double Bedroom
- No Chain
- Top Floor
- Parsons Green
- Share Of Freehold

Fulham Park Gardens, London, SW6



Total area (approx.): 36.2 sq. m (389.6 sq. ft)