



## Farm Lane, SW6

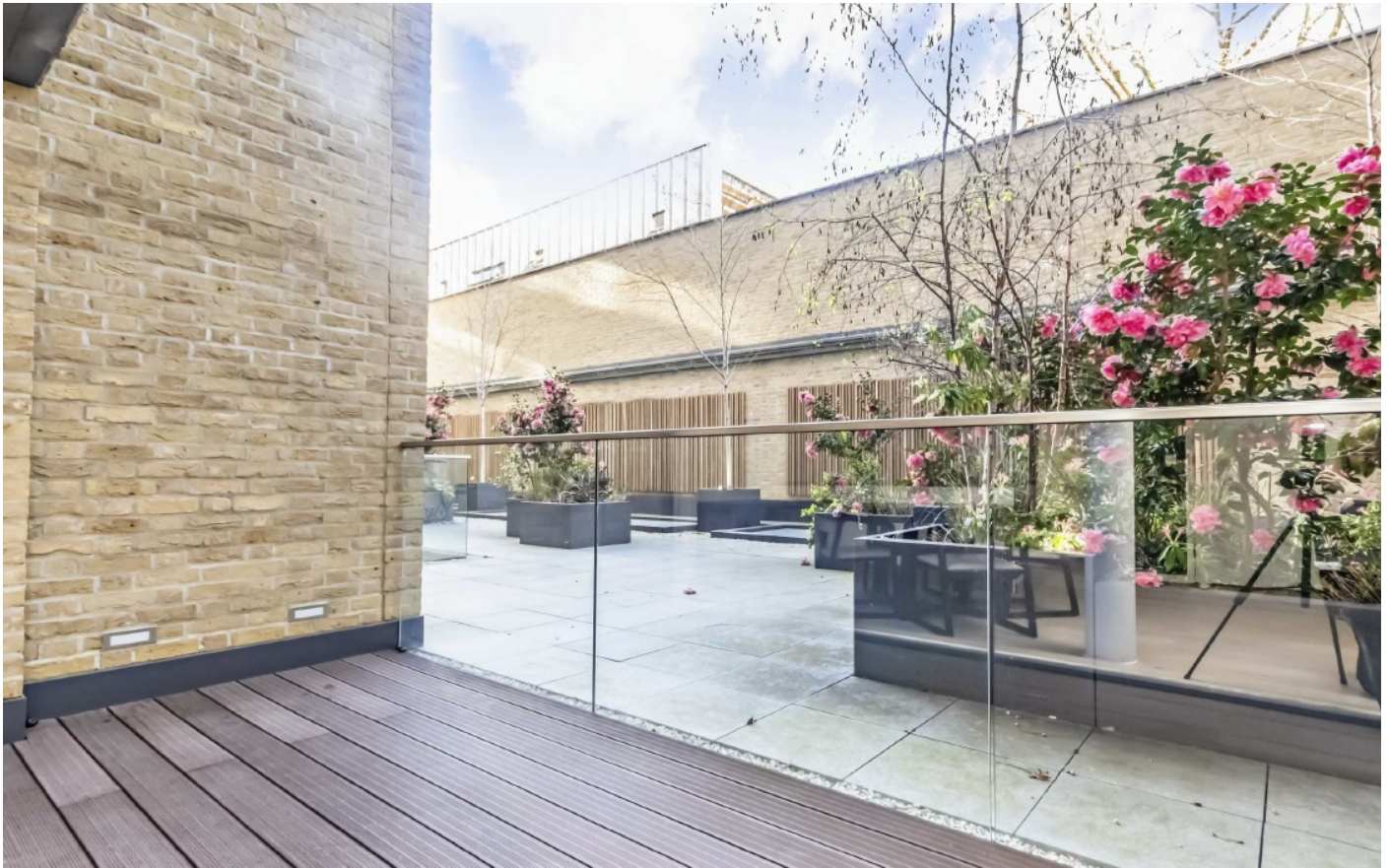
£923 Per week

This luxurious two double bedroom split level apartment features a beautiful kitchen with integrated appliances and stone worktops open onto a large reception with large bi-fold doors to a private terrace.

Landau development is one of Fulham's top developments and is situated in the heart of Fulham just moments away from local amenities including shops, cafes and restaurants. Fulham Broadway station and West Brompton Station are also just a short walk.

### Features

- Two Double Bedrooms
- Stylish Kitchen
- Two Contemporary Bathrooms
- 24 Hour Concierge & Gym
- Private Terrace
- Central Fulham Location

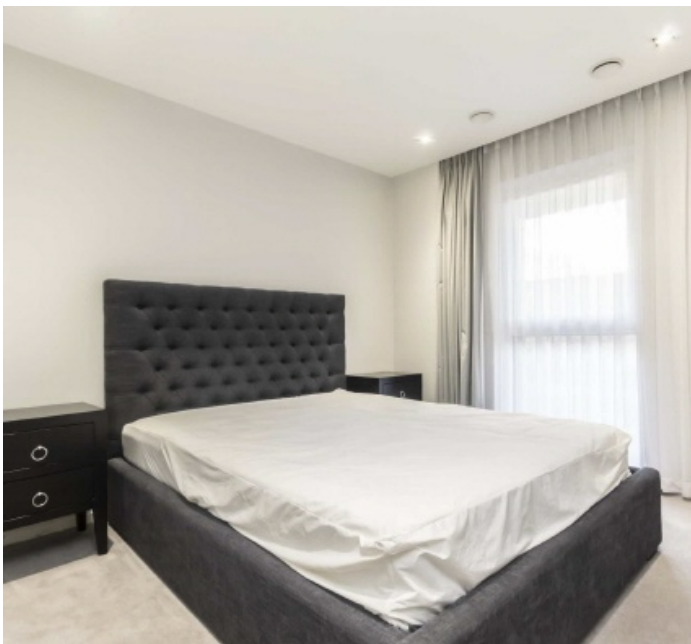


## Farm Lane, SW6

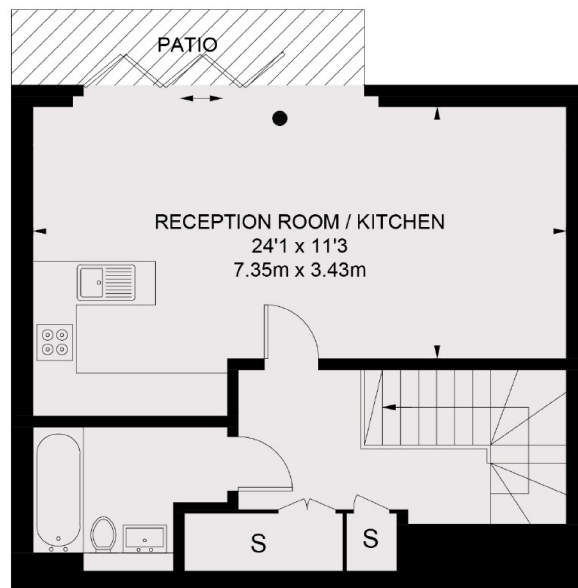
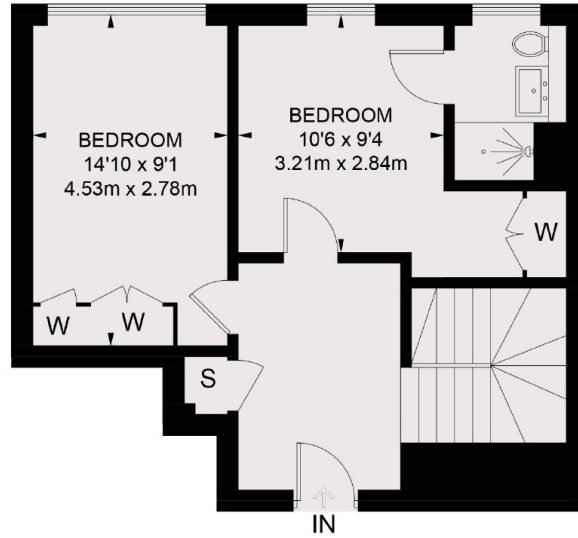
There is a stylish kitchen with integrated appliances, wine cooler, stone worktops which is open plan to a large reception room with both living and dining areas, the hard wood flooring and the contemporary decor offers a luxury feel and opens out via bi-fold doors to a private ground floor terrace suitable for al-fresco dining.

The master bedroom has fitted wardrobes and an en suite shower room, the second double bedroom also has fitted wardrobes, there is a further contemporary bathroom, ample storage throughout and the property is complete with designer furniture including Camerich sofa and dining sets. The apartment has been a modern colour scheme throughout and is perfect for a corporate or professional couple.

This stunning and spacious apartment within this popular development is set over two levels and has an array of appealing features which includes a 24 hour concierge, fully equipped gymnasium as well as the contemporary fixtures and fittings inside the apartment.



# Farm Lane, London, SW6



TOTAL APPROX. FLOOR AREA 992 SQ. FT. (92.1 SQ. M.)